



SPECIFICATIONS GUIDE

DIESEL RANGE 2018

JLG®

DIESEL RANGE
2017/2018

Hybrid Boom Lifts
Articulating Boom Lifts
Telescopic Boom Lifts
Scissor Lifts

SPECIFICATIONS

HYBRID BOOM LIFTS

H340AJ _____ 4 - 5

ARTICULATING BOOM LIFTS

340AJ _____ 6 - 7

450AJ/520AJ _____ 8 - 9

600 Series / 800 Series _____ 10 - 11

740 AJ _____ 12 - 13

Ultra Series 1250AJP / 1500AJP _____ 14 - 15

TELESCOPIC BOOM LIFTS

400 Series _____ 16 - 17

400 Crawler _____ 18 - 19

600 Series _____ 20 - 21

600 Crawler Series _____ 22 - 23

680 Series _____ 24 - 25

800 Series _____ 26 - 27

Ultra Series (1200SJP / 1350SJP / 1500SJ) _____ 28 - 29

1850SJ _____ 30 - 31

SCISSOR LIFTS

260MRT Series _____ 32 - 33

LRT Series _____ 34 - 35

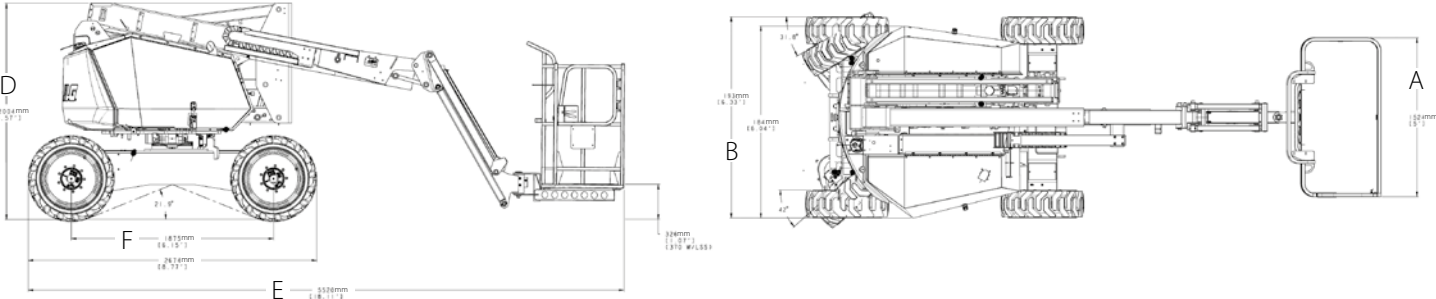
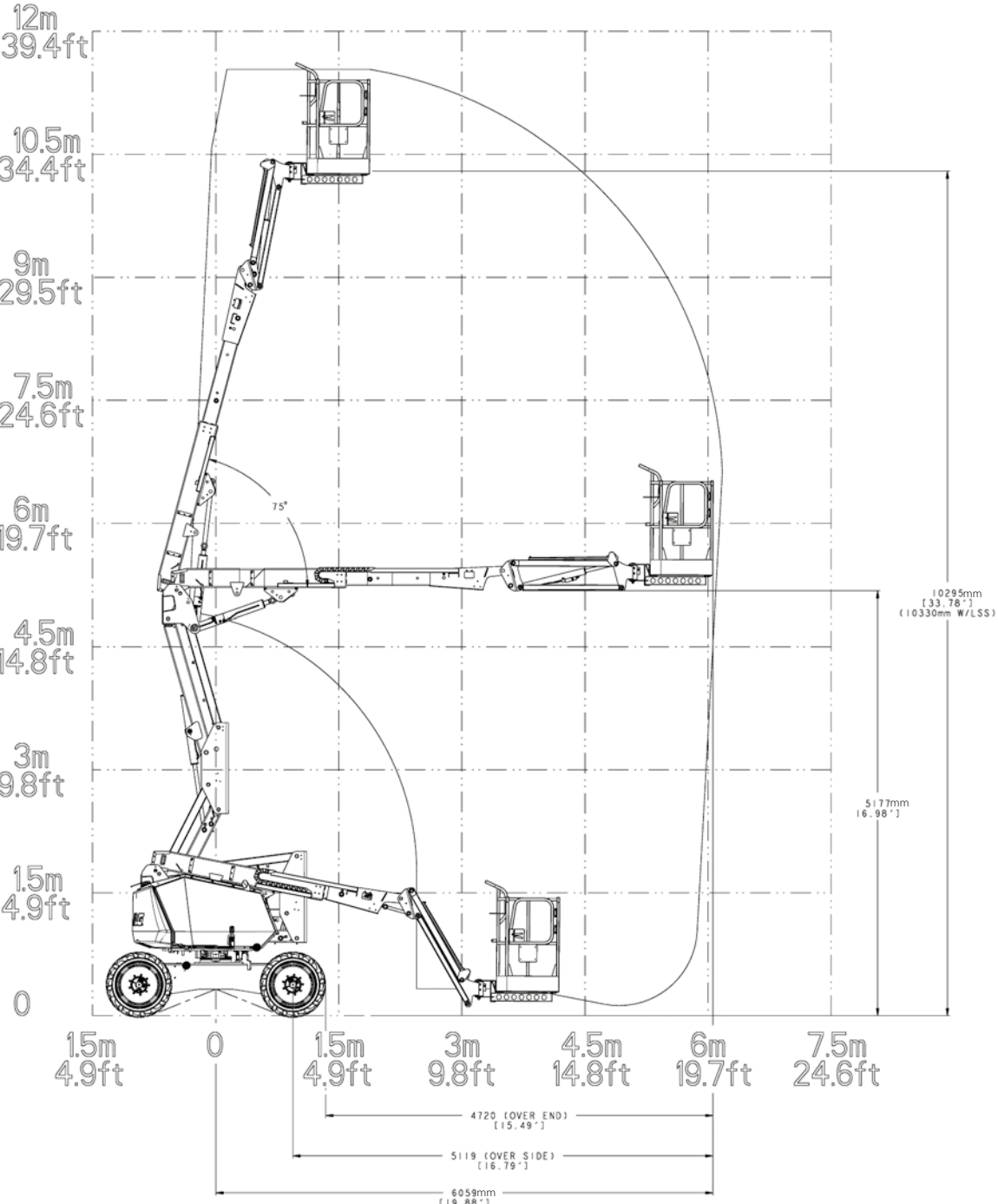
Standard Features & Available Options_____ 36 - 52

	H340AJ
Working Height	12.33 m
Platform Height	10.33 m
Horizontal Outreach	6.06 m
Working Outreach *	6.70 m*
Up and Over Height	5.17 m
Swing (non continuous)	355°
Platform Capacity - Unrestricted	230 kg
Platform Rotator (Hydraulic)	180°
Jib - Overall Length	1.22 m
Jib - Range of articulation	139° (+79°/-60°)
A. Platform Size	0.76 m x 1.52 m
B. Overall Width	1.93 m
C. Tailswing (working condition)	5 cm
D. Stowed Height	2.00 m
E. Stowed Length ¹	5.52 m
F. Wheelbase	1.87 m
G. Ground Clearance	0.24 m
Machine weight ²	4,660 kg
Maximum Ground Bearing Pressure	4.7 kg/cm ²
Drive Speed 4WD	5.9 km/h
Gradeability 4WD	45%
Tyres (Foam Filled)	9 x 20
Axle Oscillation	0.15 m
Turning Radius - Inside	1.52 m
Turning Radius - Outside	3.96 m
Diesel Engine Kubota Z482	8.3 kW
Fuel Tank Capacity	49 L
Hydraulic System	23 L
Electrical System	48V DC

* Working outreach is horizontal outreach plus 65cm.
¹ May be reduced to 3.98 m for storage / transport.
² Certain options or country standards may increase weight and/or dimensions.



JLG Model H340AJ

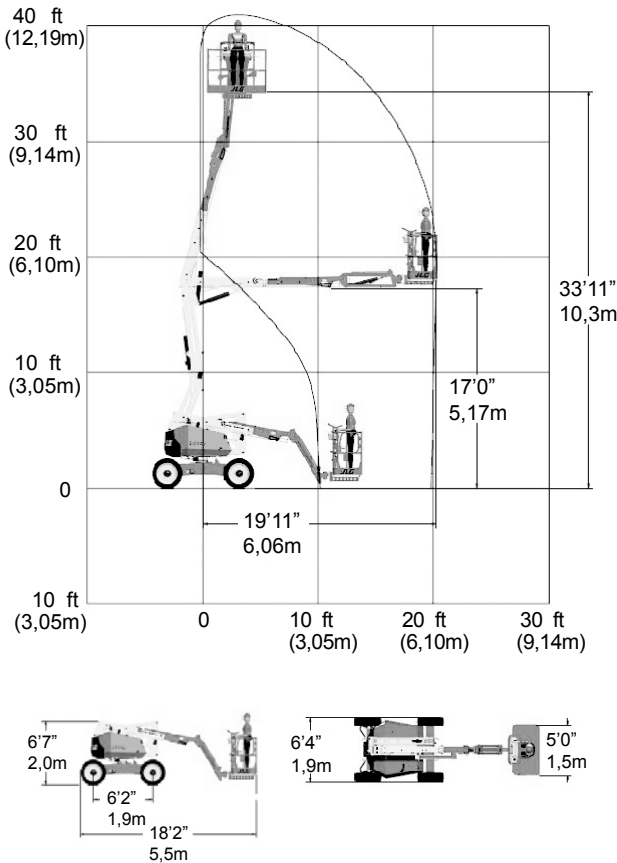


	340AJ
Working Height	12.33 m
Platform Height	10.33 m
Horizontal Outreach	6.06 m
Working Outreach *	6.71 m*
Up and Over Height	5.17 m
Swing (non continuous)	355°
Platform Capacity - Unrestricted	230 kg
Platform Rotator (Hydraulic)	180°
Jib - Overall Length	1.22 m
Jib - Range of articulation	139° (+79°/-60°)
A. Platform Size	0.76 m x 1.52 m
B. Overall Width	1.93 m
C. Tailswing (working condition)	5 cm
D. Stowed Height	2.00 m
E. Stowed Length	5.52 m ²
F. Wheelbase	1.87 m
G. Ground Clearance	0.24 m
Machine weight ¹	4,450 kg
Maximum Ground Bearing Pressure	4.6 kg/cm ²
Drive Speed 4WD	5 km/h
Gradeability 4WD	45%
Tyres (Foam Filled)	9 x 20
Axle Oscillation	0.15 m
Turning Radius - Inside	1.52 m
Turning Radius - Outside	3.96 m
Diesel Engine	Kubota D1105 18.5 kW
Fuel Tank Capacity	49 L
Hydraulic System	106 L
Auxiliary Power	12V DC

* Working outreach is horizontal outreach plus 65cm.
¹ Certain options or country standards may increase weight and/or dimensions.
² May be reduced to 3.98 m for storage / transport.
³ Optional.



JLG Model 340AJ

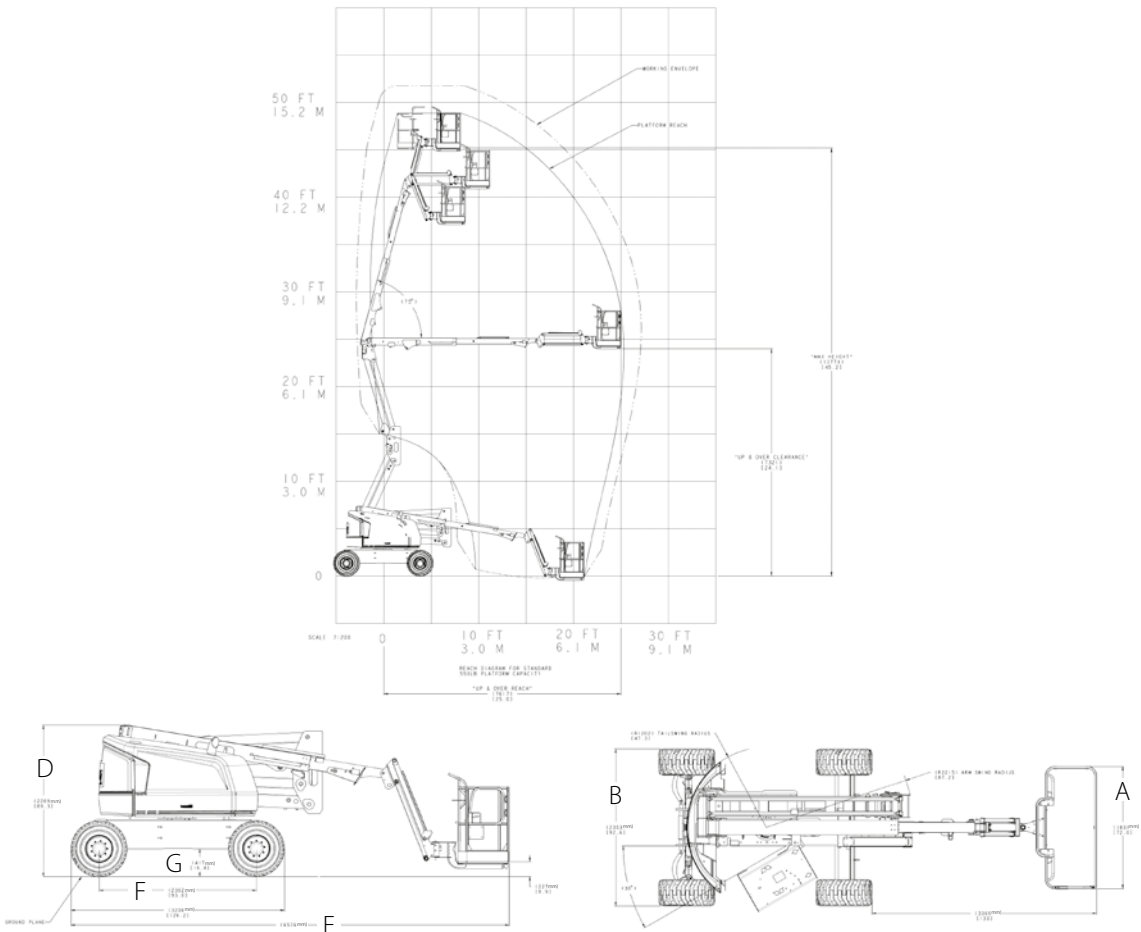


	450AJ	520AJ
Working Height	15.77 m	18.0 m
Platform Height	13.72 m	16.0 m
Horizontal Outreach	7.62 m	10.0 m
Working Outreach *	8.27 m*	10.65 m*
Up and Over Height	7.30 m	7.30 m
Swing (non continuous)	355°	355°
Platform Capacity - Unrestricted	250 kg	250 kg
Platform Rotator (Hydraulic)	180°	180°
Jib - Overall Length	1.24 m	1.24 m
Jib - Range of articulation	145° (+76°/ -69°)	145° (+76°/ -69°)
A. Platform Size	0.76 m x 1.83 m	0.76 m x 1.83 m
B. Overall Width	2.35 m	2.35 m
C. Tailswing (working condition)	Zero	Zero
D. Stowed Height	2.27 m	2.27 m
E. Stowed Length	6.58 m	7.77 m
F. Wheelbase	2.36 m	2.36 m
G. Ground Clearance	0.42 m	0.42 m
Machine weight ¹	6,495 kg	7,985 kg
Maximum Ground Bearing Pressure	4.0 kg/cm ²	6.6 kg/cm ²
Drive Speed 4WD	6.8 km/h	6.8 km/h
Gradeability 4WD	45%	45%
Tyres (Foam Filled)	33/1550 x 16.5	33/1550 x 16.5
Axle Oscillation	0.10 m	0.10 m
Turning Radius - Inside	2.06 m	2.06 m
Turning Radius - Outside	4.78 m	4.78 m
Diesel Engine Deutz D2.3 L3	36.4 kW	36.4 kW
Fuel Tank Capacity	60.5 L	60.5 L
Hydraulic System	144 L	144 L
Auxiliary Power	12V DC	12V DC

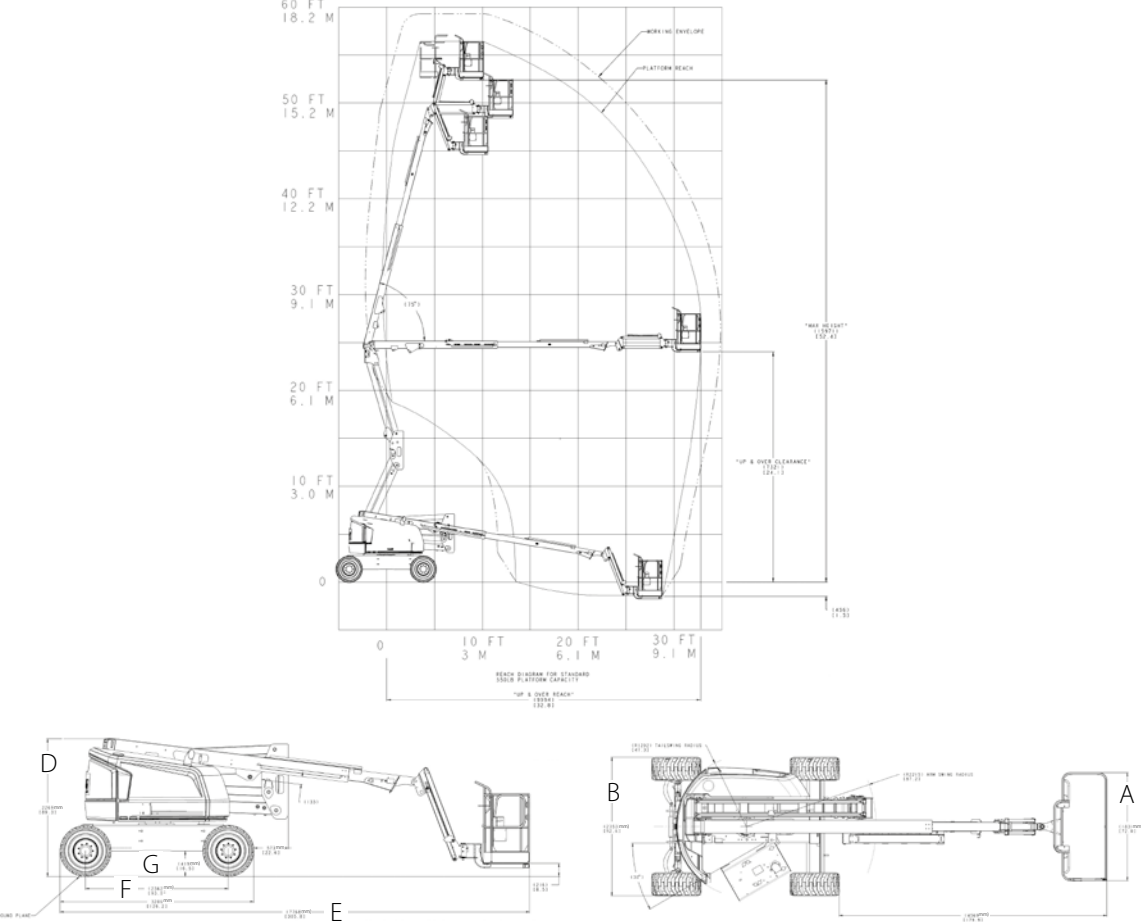
* Working outreach is horizontal outreach plus 65cm.
¹ Certain options or country standards may increase weight and/or dimensions.



JLG Model 450AJ

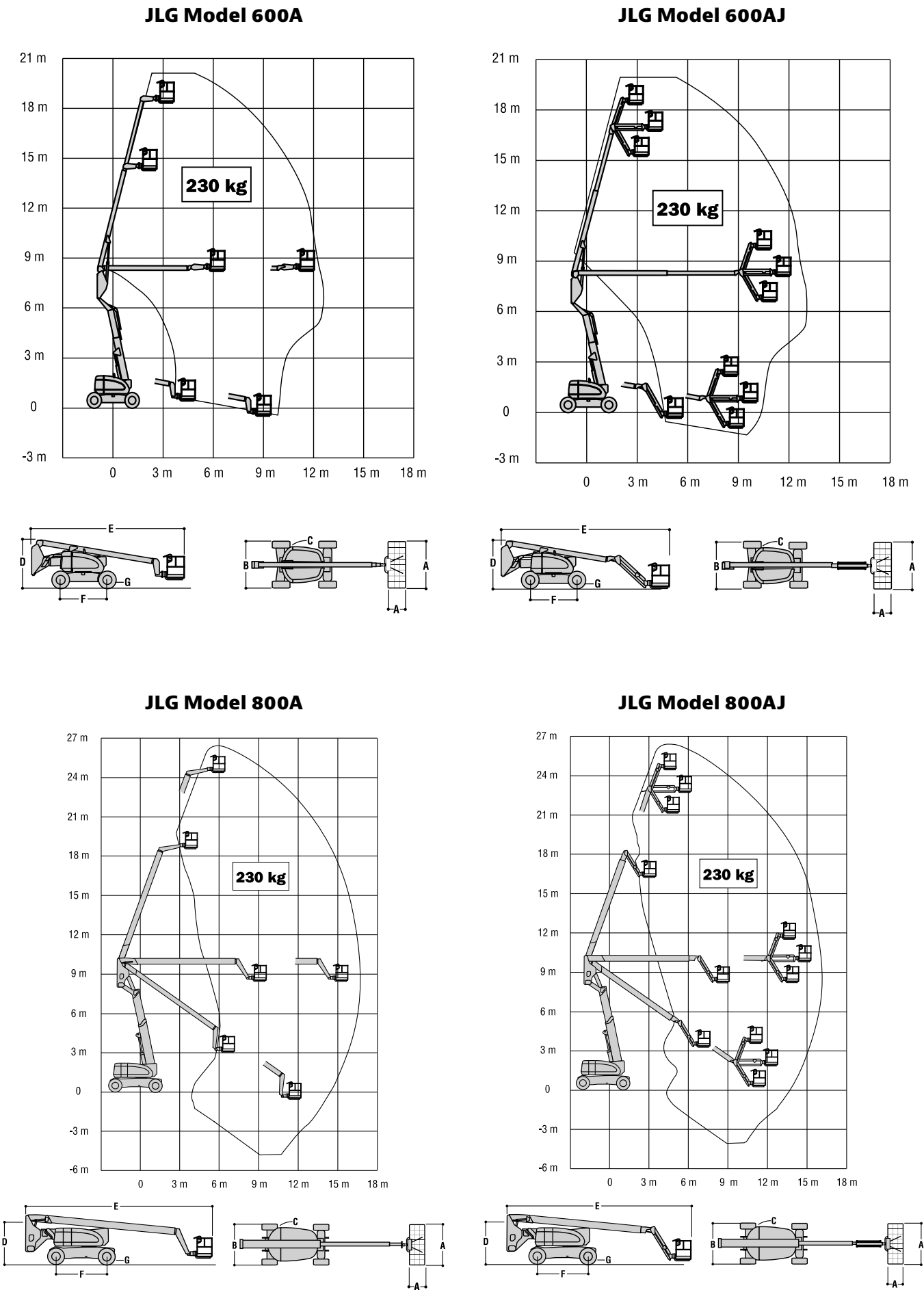


JLG Model 520AJ



	600A	600AJ	600A narrow	600AJ narrow	800A	800AJ
Working Height	20.42 m	20.46 m	20.42 m	20.46 m	26.38 m	26.38 m
Platform Height	18.42 m	18.46 m	18.42 m	18.46 m	24.38 m	24.38 m
Horizontal Outreach	12.07 m	12.10 m	12.07 m	12.10 m	16.15 m	15.80 m
Working Outreach *	12.72 m*	12.75 m*	12.72 m*	12.75 m*	16.80 m*	16.45 m*
Up and Over Height	8.09 m	8.09 m	8.09 m	8.09 m	9.78 m	9.78 m
Swing (Continuous)	360°	360°	360°	360°	360°	360°
Platform Capacity - Unrestricted	230 kg	230 kg	230 kg	230 kg	230 kg	230 kg
Platform Rotator (Hydraulic)	180°	180°	180°	180°	180°	180°
Jib - Overall Length	—	1.83 m	—	1.83 m	—	1.83 m
Jib - Range of articulation	—	130° (+70° / -60°)	—	130° (+70° / -60°)	—	130° (+70° / -60°)
A. Platform Size	0.91 m x 1.83 m	0.91 m x 1.83 m	0.91 m x 1.83 m	0.91 m x 1.83 m	0.91 m x 1.83 m	0.91 m x 1.83 m
B. Overall Width	2.49 m	2.49 m	2.13 m	2.13 m	2.49 m	2.49 m
C. Tailswing - working condition	Zero	Zero	0.13 m	0.13 m	0.76 m	0.76 m
D. Stowed Height	2.54 m	2.57 m	2.53 m	2.56 m	3.00 m	3.00 m
E. Stowed Length	8.10 m	8.82 m	8.10 m	8.82 m	11.25 m	11.13 m
F. Wheelbase	2.48 m	2.48 m	2.44 m	2.44 m	3.05 m	3.05 m
G. Ground Clearance	0.30 m	0.30 m	0.28 m	0.28 m	0.28 m	0.28 m
Machine weight ¹	10,160 kg	10,660 kg	10,840 kg	11,000 kg	16,110 kg	16,110 kg
Maximum Ground Bearing Pressure	5.4 kg/cm²	5.3 kg/cm²	6.6 kg/cm²	6.6 kg/cm²	5.60 kg/cm²	5.60 kg/cm²
Drive Speed 2WD	6.8 km/h	6.8 km/h	6.8 km/h	6.8 km/h	4.8 km/h	4.8 km/h
Drive Speed 4WD	6.8 km/h	6.8 km/h	—	—	4.8 km/h	4.8 km/h
Gradeability 2WD	30%	30%	30%	30%	30%	30%
Gradeability 4WD	45%	45%	—	—	45%	45%
Tyres	IN 355/55 D625 Foam Filled	IN 355/55 D625 Foam Filled	14 x 17.5 Solid Segmented	14 x 17.5 Solid Segmented	18 - 625 Foam Filled	18 - 625 Foam Filled
Axle Oscillation	0.20 m	0.20 m	—	—	0.20 m	0.20 m
Turning Radius - Inside 2WS	3.33 m	3.33 m	—	—	3.81 m	3.81 m
Turning Radius - Inside 4WS	1.40 m	1.40 m	1.56 m	1.56 m	1.83 m	1.83 m
Turning Radius - Outside 2WS	5.36 m	5.36 m	—	—	6.02 m	6.02 m
Turning Radius - Outside 4WS	2.95 m	2.95 m	3.60 m	3.60 m	3.53 m	3.53 m
Diesel Engine	Deutz D2011L04 36.4 kW	Deutz D2011L04 36.4 kW	Deutz D2011L04 36.4 kW	Deutz D2011L04 36.4 kW	Deutz TD 2.9 L4 50 kW	Deutz TD 2.9 L4 50 kW
Fuel Tank Capacity	114 L	114 L	114 L	114 L	151 L	151 L
Hydraulic Reservoir	151 L	151 L	151 L	151 L	261 L	261 L
Auxiliary Power	12V DC	12V DC	12V DC	12V DC	12V DC	12V DC

* Working outreach is horizontal outreach plus 65cm.
¹ Certain options or country standards may increase weight and/or dimensions.

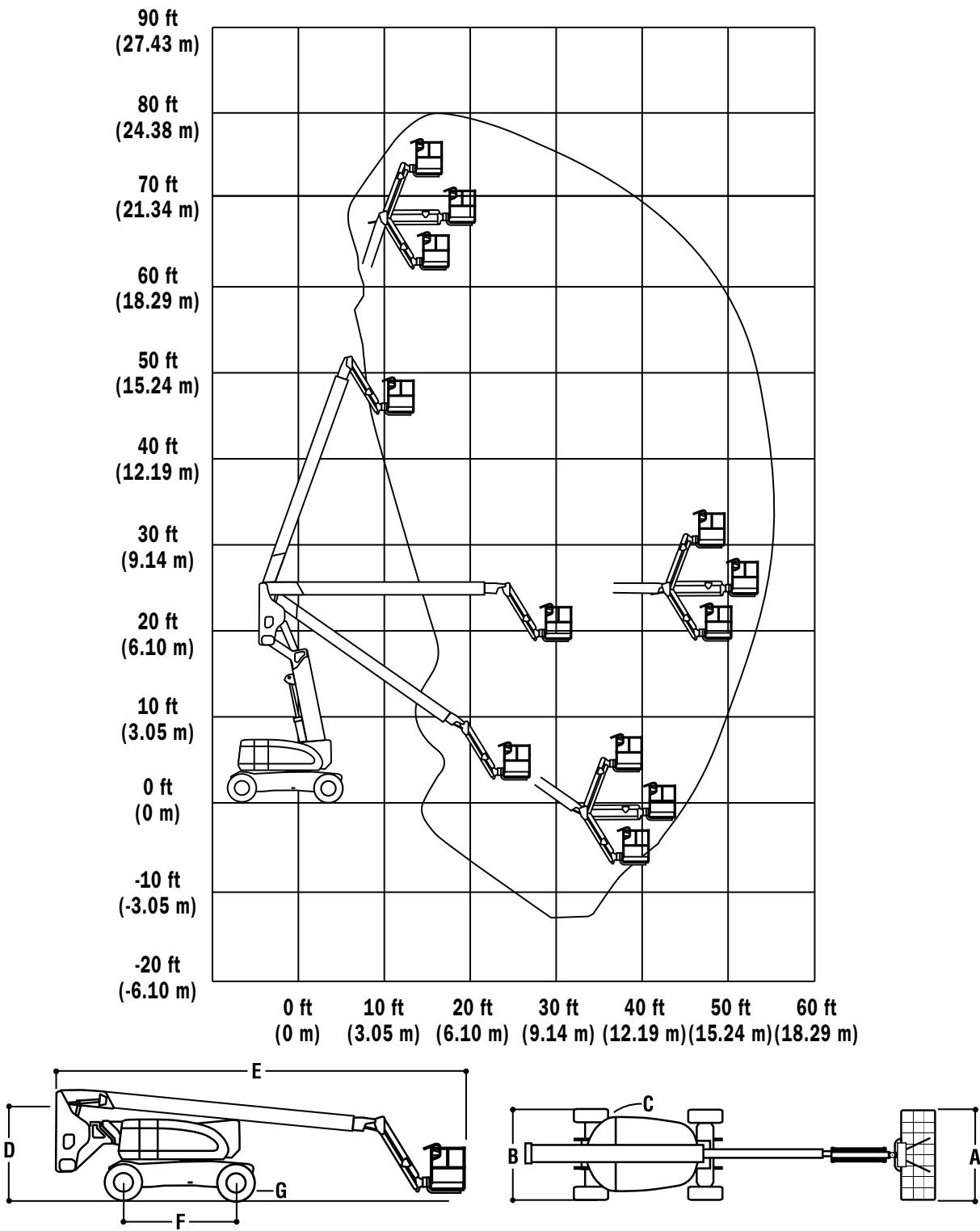


	740AJ
Working Height	24.55 m
Platform Height	22.55 m
Horizontal Outreach	15.80 m
Working Outreach *	16.45 m*
Up and Over Height	7.64 m
Swing (continuous)	360°
Platform Capacity - Unrestricted	230 kg
Platform Rotator (Hydraulic)	180°
Jib - Overall Length	1.83 m
Jib - Range of articulation	130° (+70°/ -60°)
A. Platform Size	0.91 m x 1.83 m
B. Overall Width	2.49 m
C. Tailswing (working condition)	0.76 m
D. Stowed Height	3.0 m
E. Stowed Length	11.13 m
F. Wheelbase	3.05 m
G. Ground Clearance	0.28 m
Machine weight ¹	16,420 kg
Maximum Ground Bearing Pressure	5.9 kg/cm²
Drive Speed 4WD	4.8 km/h
Gradeability 4WD	45%
Tyres (Foam Filled)	18 - 625
Turning Radius - Inside	1.83 m
Turning Radius - Outside	3.53 m
Diesel Engine Deutz TD 2.9 L4	50 kW
Fuel Tank Capacity	151 L
Hydraulic System	151 L
Auxiliary Power	12V DC

* Working outreach is horizontal outreach plus 65cm.
¹ Certain options or country standards may increase weight and/or dimensions.



JLG Model 740AJ

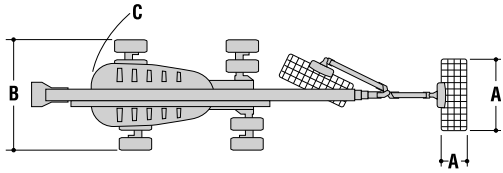
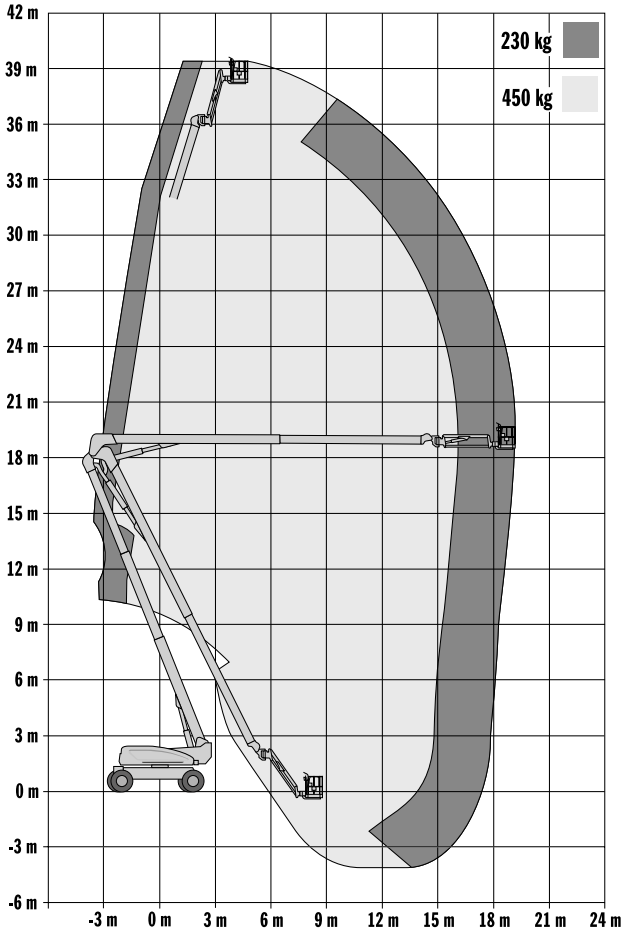


	1250AJP	1500AJP
Working Height	40.30 m	48.15 m
Platform Height	38.30 m	46.15 m
Horizontal Outreach	19.25 m	22.90 m**
Working Outreach *	19.90 m*	23.55 m*
Up and Over Height	18.44 m	18.40 m
Swing (Continuous)	360°	360°
Platform Capacity - Restricted	450 kg	450 kg
Platform Capacity - Unrestricted	230 kg	270 kg
Platform Rotator (Hydraulic)	180°	180°
Jib - Overall Length	2.44 m	2.44 m
Jib - Range of articulation	130° Vertical (+75°/-55°)	130° Vertical (+75°/-55°)
JibPLUS® - Range of Articulation	125° Horizontal	125° Horizontal
A. Platform Size	0.91 m x 2.44 m	0.91 m x 2.44 m
B. Overall Width (Axles Retracted)	2.49 m	2.50 m
Overall Width (Axles Extended)	3.81 m	5.00 m
C. Tailswing (working condition)	0.91 m	0.70 m
D. Stowed Height	3.05 m	3.10 m
E. Stowed Length (transport position)	11.46 m	12.10 m
F. Wheelbase	3.81 m	4.60 m
G. Ground Clearance	0.30 m	0.30 m
Machine weight ¹	21,000 kg	26,027 kg
Maximum Ground Bearing Pressure	7.03 kg/cm²	8,65 kg/cm²
Drive Speed	5.2 km/h	4.5 km/h
Gradeability	45%	40%
Tyres (Foam Filled)	445/50D710	445/50D710 24 ply
Axle Oscillation	0.30 m	0.30 m
Turning Radius - Inside (Axles Retracted)	4.39 m	7.10 m
Turning Radius - Inside (Axles Extended)	2.44 m	2.30 m
Turning Radius - Outside (Axles Retracted)	6.86 m	9.50 m
Turning Radius - Outside (Axles Extended)	5.89 m	6.60 m
Diesel Engine Deutz TCD 2.9 L4	55.4 kW	
Diesel Engine - Deutz TCD 3.6 T4F		74.4 kW
Fuel Tank Capacity	117 L	170 L
Hydraulic System	390 L	352 L
Auxiliary Power	12V DC	12V DC

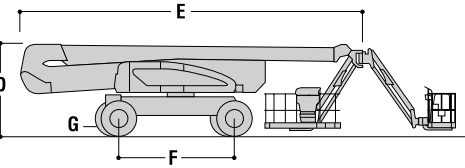
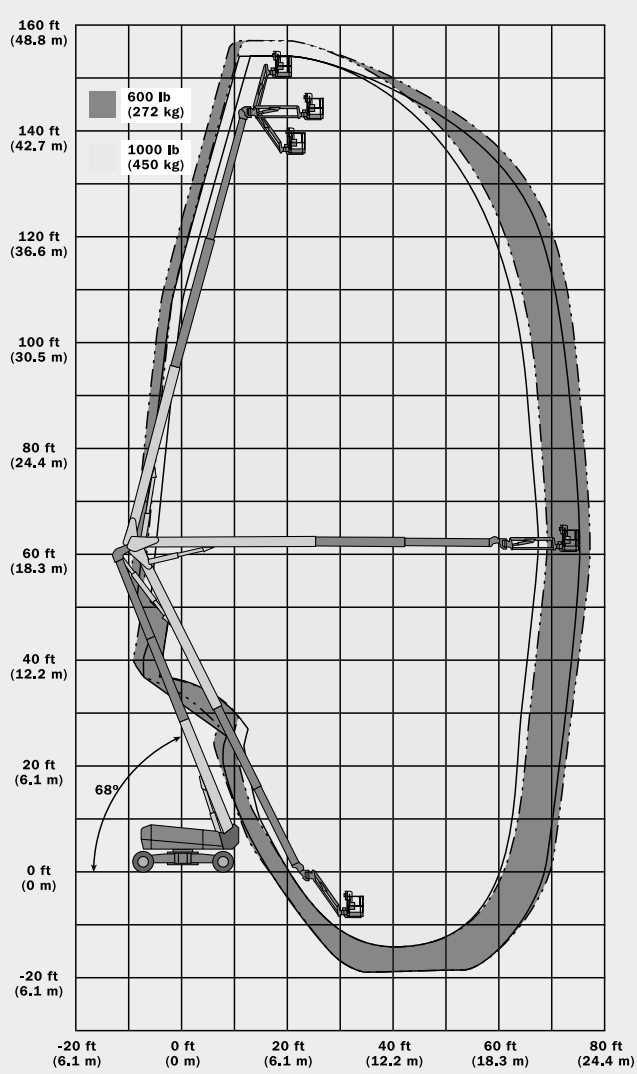
* Working outreach is horizontal outreach plus 65cm.
** Incl 0.65cm arms length
¹ Certain options or country standards may increase weight and/or dimensions.



JLG Model 1250AJP



JLG Model 1500AJP

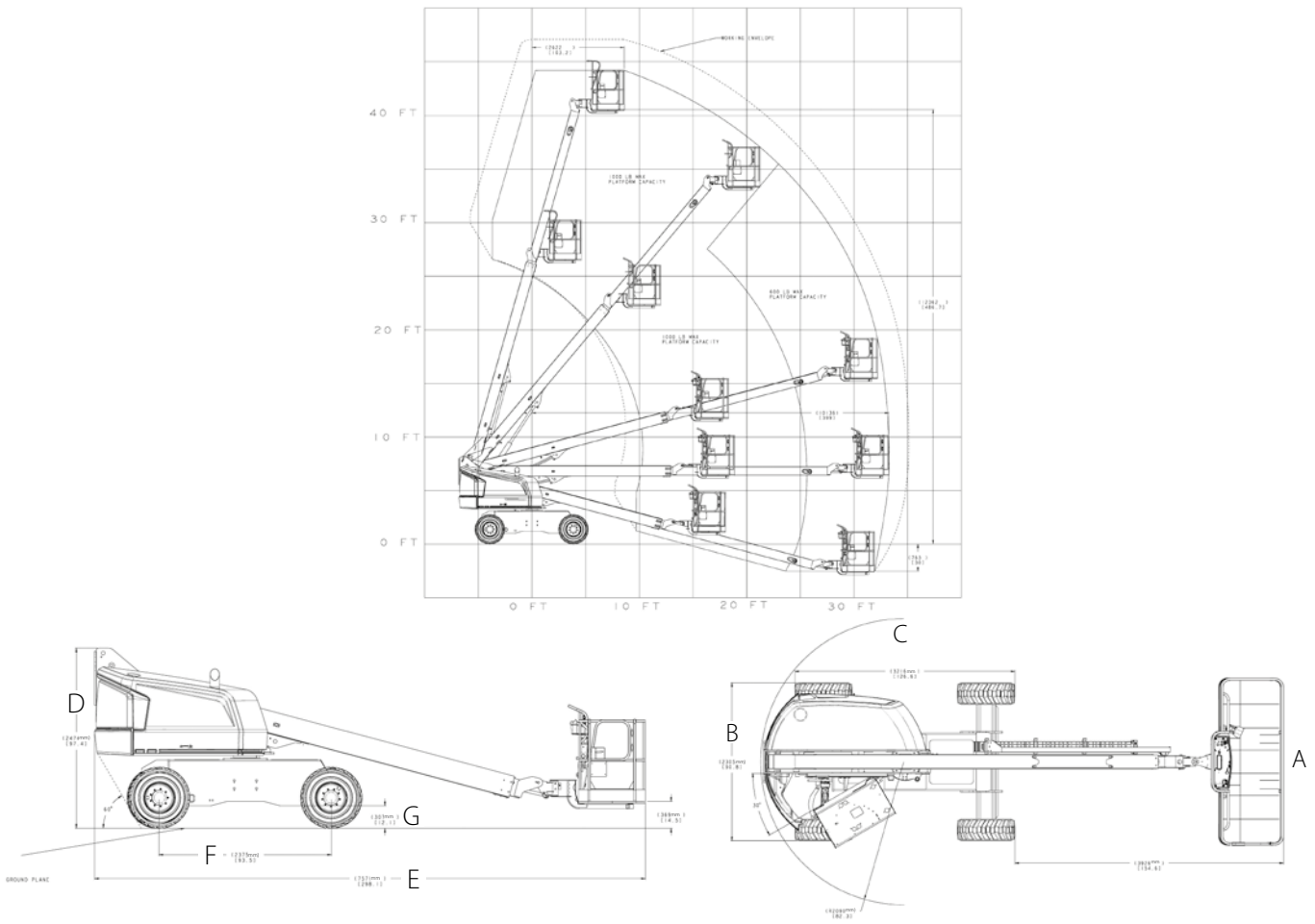


	400S	460SJ
Working Height	14.36 m	16.09 m
Platform Height	12.19 m	14.02 m
Horizontal Reach	10.13 m	12.07 m
Working Outreach *	10.78 m*	12.72 m*
Swing (Continuous)	360°	360°
Platform Capacity - Restricted	450 kg	N/A
Platform Capacity - Unrestricted	270 kg	270 kg
Platform Rotator (Hydraulic)	180°	180°
Jib - Overall Length	—	1.83 m
Jib - Range of articulation	—	130° (+70°/-60°)
A. Platform Size	0.91 m x 1.83 m	0.91 m x 1.83 m
B. Overall Width	2.31 m	2.31 m
C. Tailswing (working condition)	0.86 m	0.86 m
D. Stowed Height	2.47 m	2.47 m
E. Stowed Length	7.57 m	8.91 m
F. Wheelbase	2.37 m	2.37 m
G. Ground Clearance	0.30 m	0.30 m
Machine weight ¹	6,680 kg	7,975 kg
Maximum Ground Bearing Pressure	4.08 kg/cm²	4.85 kg/cm²
Maximum Tyre Load	3,266 kg	4,082 kg
Drive Speed 4WD	7.2 km/h	7.2 km/h
Gradeability 4WD	45%	45%
Tyres	12 x 16.5 Foam Filled	12 x 16.5 Foam Filled
Axle Oscillation (optional)	0.20 m	0.20 m
Turning Radius - Inside	2.0 m	2.0 m
Turning Radius - Outside	4.84 m	4.84 m
Diesel Engine Deutz D2.3 L3	36.4 kW	36.4 kW
Fuel Tank Capacity	83 L	83 L
Hydraulic System	136 L	136 L
Auxiliary Power	12V DC	12V DC

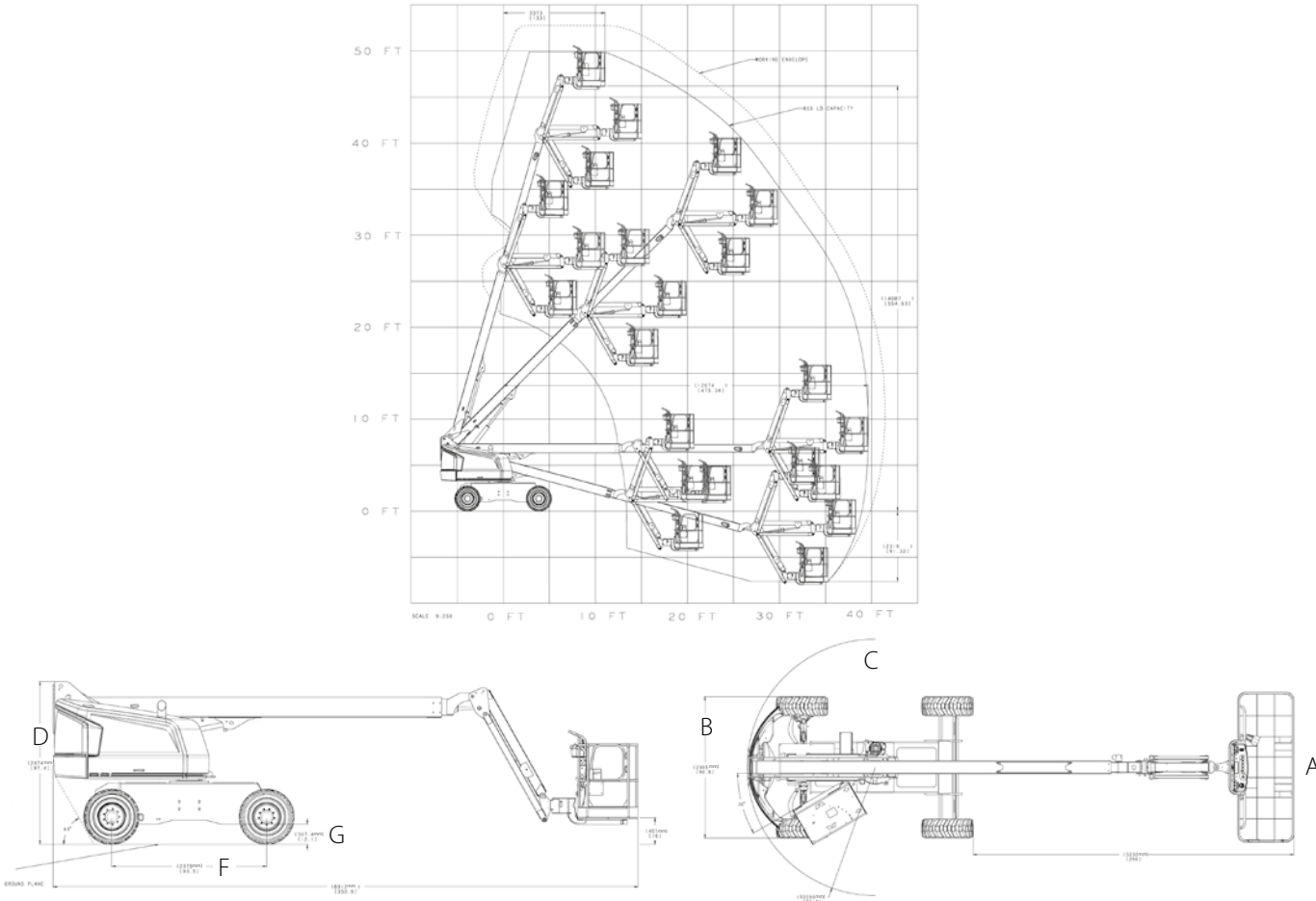
* Working outreach is horizontal outreach plus 65cm.
¹ Certain options or country standards may increase weight and/or dimensions.



JLG Model 400S



JLG Model 460SJ

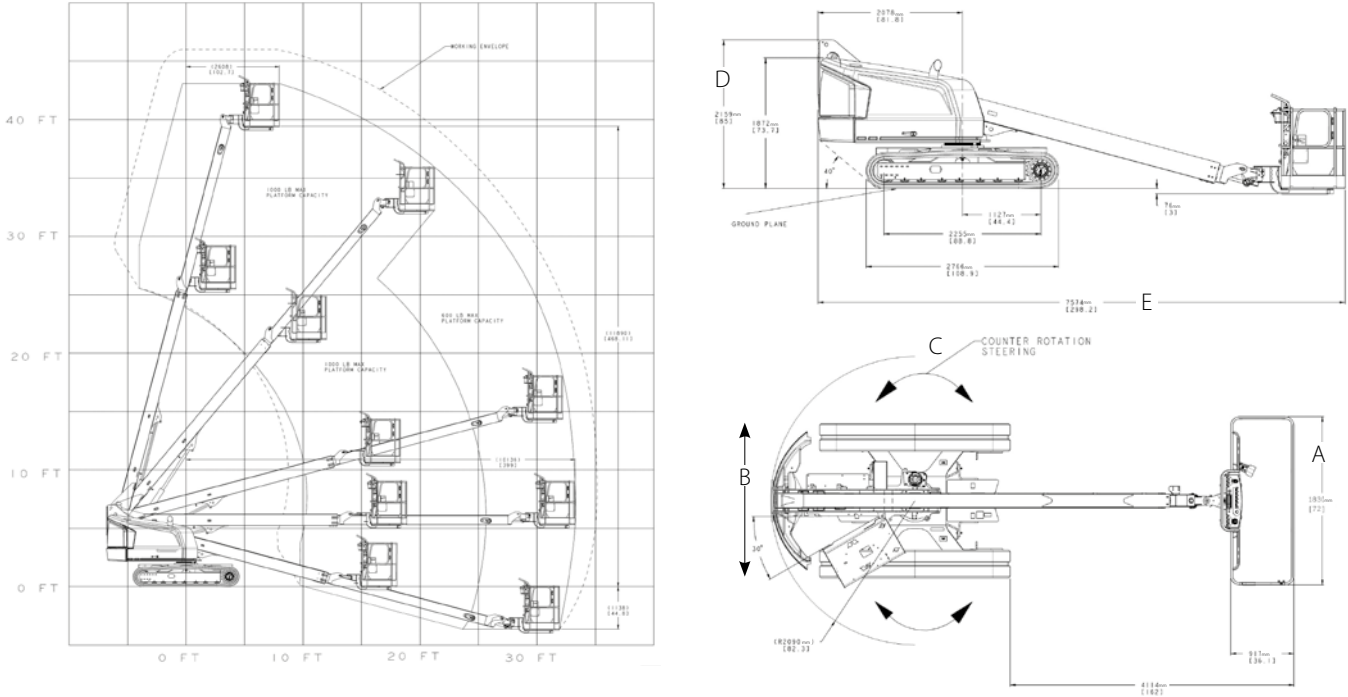


	400SC	460SJC
Working Height **	14.05 m	15.88 m
Platform Height	12.05 m	13.88 m
Horizontal Outreach	10.00 m	12.00 m
Working Outreach *	10.65 m*	12.65 m*
Swing (Continuous)	360°	360°
Platform Capacity - Restricted	450 kg	N/A
Platform Capacity - Unrestricted	270 kg	270 kg
Platform Rotator (Hydraulic)	180°	180°
Jib - Overall Length	—	1.83 m
Jib - Range of articulation	—	130°
A. Platform Size	0.91 m x 1.83 m	0.91 m x 1.83 m
B. Overall Width	2.24 m	2.24 m
C. Tailswing (working condition)	0.49 m	0.30 m
D. Stowed Height	2.16 m	2.32 m
E. Stowed Length	7.57 m	8.91 m
F. Wheelbase	2,25 m	2.25 m
G. Ground Clearance	0.32 m	0.32 m
Machine weight ¹	6,610 kg	8,164 kg
Maximum Ground Bearing Pressure	3.62 kg/cm²	4.77 kg/cm²
Drive Speed	2.6 km/h	2.9 km/h
Gradeability	51%	51%
Turning Radius	Zero	Zero
Type of Tracks	Rubber	Rubber
Track Width	0.40 m	0.40 m
Diesel Engine Deutz D2.3 L3	36.5 kW	36.5 kW
Fuel Tank Capacity	83 L	117 L
Hydraulic System	136 L	136 L
Auxiliary Power	12V DC	12V DC

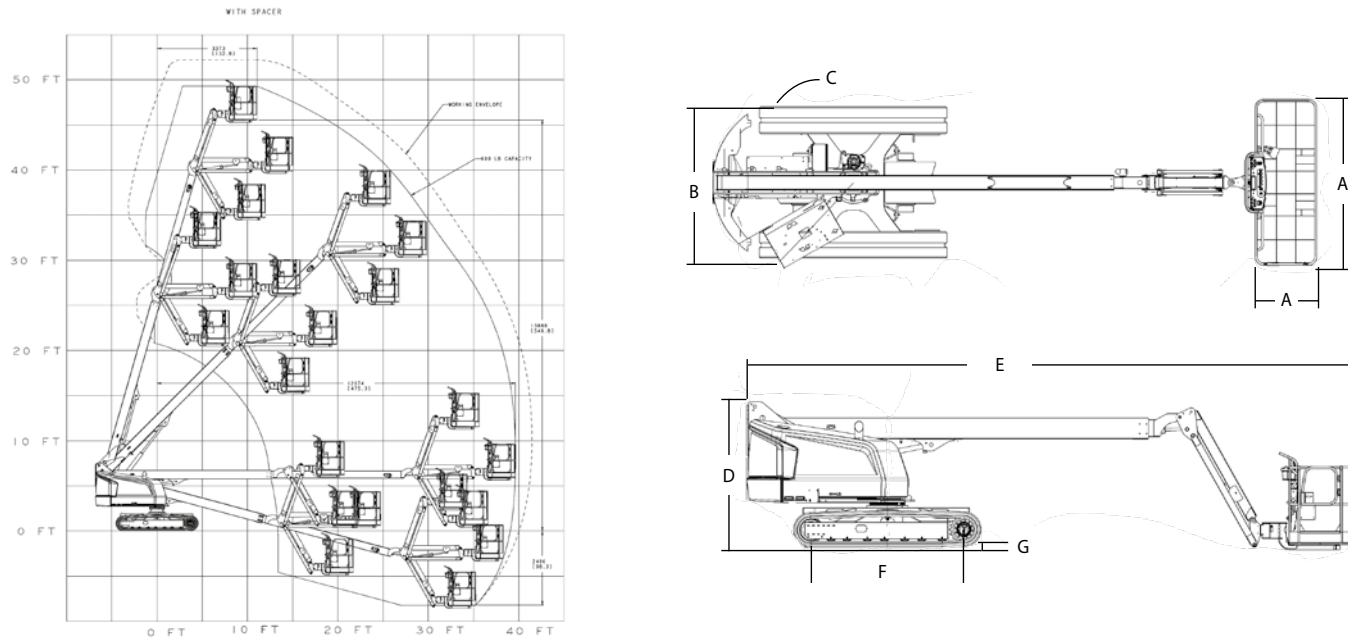
* Working outreach is horizontal outreach plus 65cm.
** incl. spacer ring
¹ Certain options or country standards may increase weight and/or dimensions.



JLG Model 400SC



JLG Model 460SJC

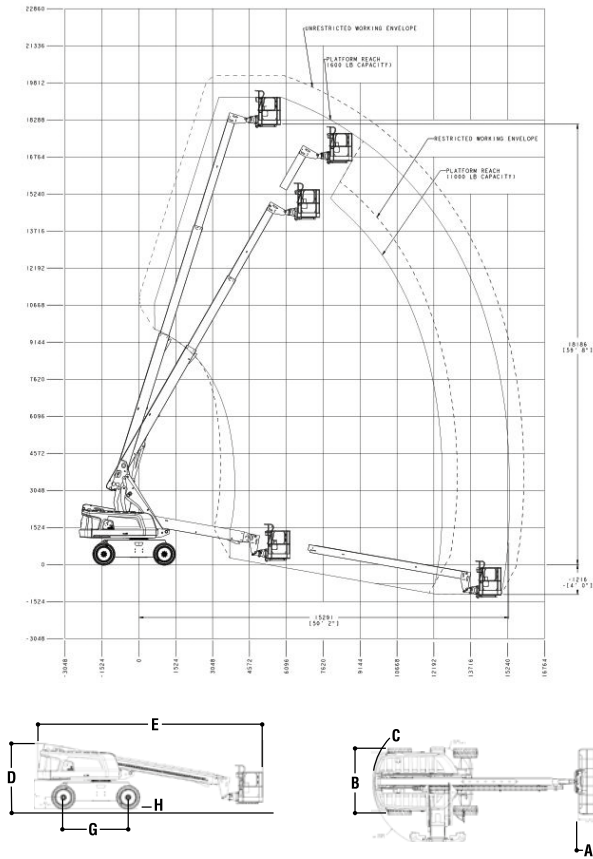


	600S	660SJ
Working Height	20.19 m	22.02 m
Platform Height	18.19 m	20.02 m
Horizontal Outreach	15.29 m	17.40 m
Working Outreach *	15.94 m*	18.05 m*
Swing (Continuous)	360°	360°
Platform Capacity - Unrestricted	270 kg	270 kg
Platform Capacity – Restricted	455 kg	340 kg
Platform Rotator (Hydraulic)	160°	180°
Jib - Overall Length	—	1.83 m
Jib - Range of articulation	—	130° (+70°/-60°)
A. Platform Size	0.91 m x 1.83 m	0.91 m x 1.83 m
B. Overall Width	2.49 m	2.49 m
C. Tailswing (working condition)	1.22 m	1.22 m
D. Stowed Height	2.50 m	2.50 m
E. Overall Length	8.71 m	10.79 m
G. Wheelbase	2.51 m	2.51 m
H. Ground Clearance	0.29 m	0.29 m
Machine weight ¹	9,819 kg	11,603 kg
Maximum Ground Bearing Pressure	5.84 kg/cm²	6.07 kg/cm²
Maximum Tyre Load	5,788 kg	6,677 kg
Drive Speed 4 x 4 x 2	6.8 km/h	6.8 km/h
Gradeability 4 x 4 x 2	45%	45%
Tyres	355/55D625 Foam Filled	355/55D625 Foam Filled
Axle Oscillation (optional)	0.20 m	0.20 m
Turning Radius - Inside 2WS	2.92 m	2.92 m
Turning Radius - Inside 4WS	1.61 m	1.61 m
Turning Radius - Outside 2WS	5.96 m	5.96 m
Turning Radius - Outside 4WS	3.87 m	3.87 m
Diesel Engine Deutz D2011L04	36.4 kW	36.4 kW
Fuel Tank Capacity	117 L	117 L
Hydraulic System	129 L	129 L
Auxiliary Power	12V DC	12V DC

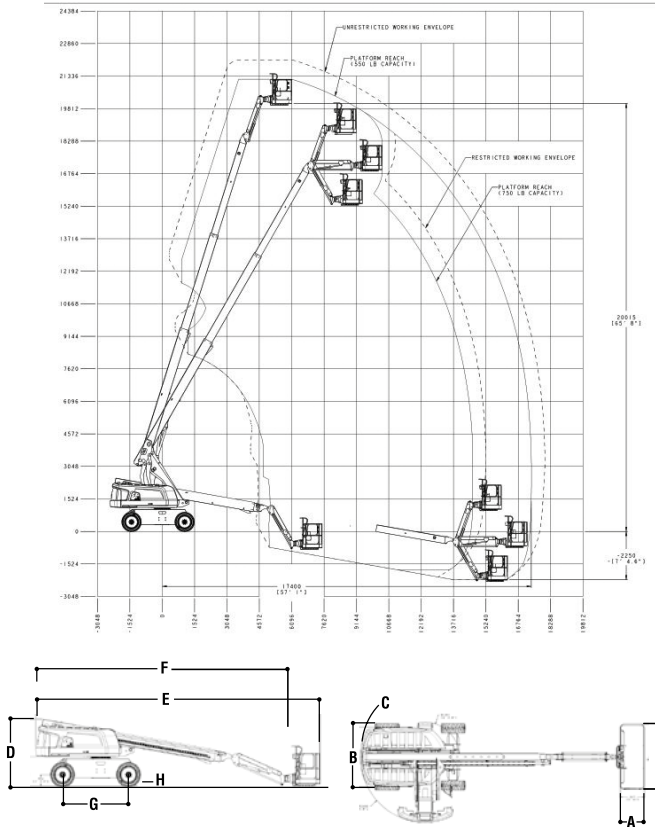
* Working outreach is horizontal outreach plus 65cm.
¹ Certain options or country standards may increase weight and/or dimensions.



JLG Model 600S



JLG Model 660SJ

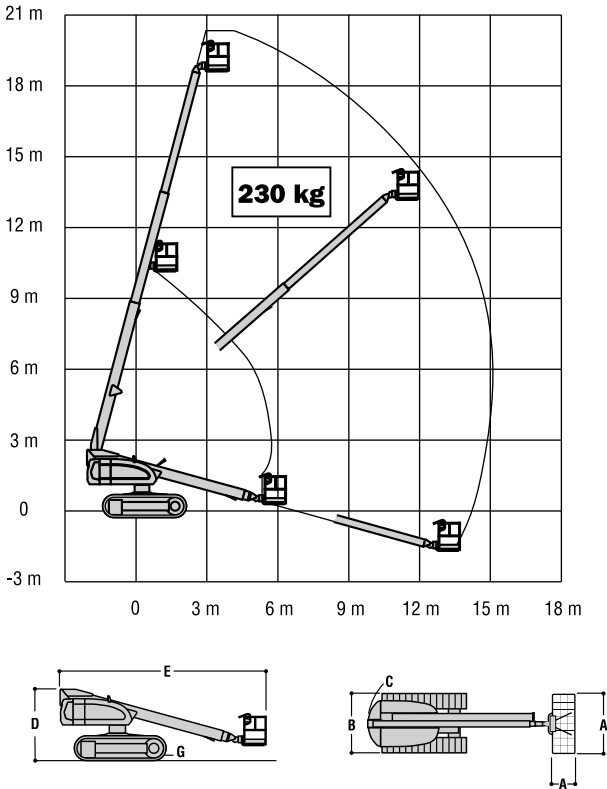


	600SC	660SJC
Working Height	20.36 m	22.31 m
Platform Height	18.36 m	20.31 m
Horizontal Outreach	15.08 m	17.30 m
Working Outreach *	15.73 m*	17.95 m*
Swing (continuous)	360°	360°
Platform Capacity - Unrestricted	230 kg	230 kg
Platform Rotator (hydraulic)	160°	180°
Jib - Overall Length	—	1.83 m
Jib - Range of articulation	—	130° (+70°/-60°)
A. Platform Size	0.91 m x 1.83 m	0.91 m x 1.83 m
B. Overall Width	2.49 m	2.49 m
C. Tailswing (working condition)	1.10 m	1.10 m
D. Stowed Height	2.56 m	2.56 m
E. Overall Length	8.51 m	10.74 m
F. Stowed Length	8.51 m	10.21 m
G. Ground Clearance	0.38 m	0.38 m
Machine weight ¹	10,230 kg	12,300 kg
Maximum Ground Bearing Pressure	0.383 kg/cm²	0.457 kg/cm²
Drive Speed	2.6 km/h	2.6 km/h
Gradeability	55%	55%
Turning Radius	Zero	Zero
Type of Tracks ²	Steel	Steel
Track Width	0.50 m	0.50 m
Diesel Engine - Deutz TD 2.9 L4	50 kW	50 kW
Fuel Tank Capacity	148 L	148 L
Hydraulic System	141 L	141 L
Auxiliary Power	12V DC	12V DC

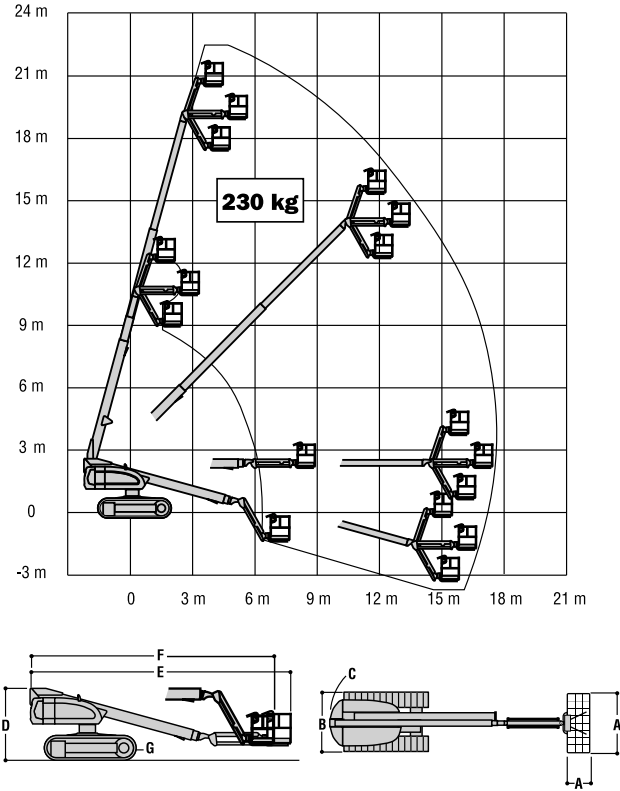
* Working outreach is horizontal outreach plus 65cm.
¹ Certain options or country standards may increase weight and/or dimensions.
² Optional detachable rubber pads available



JLG Model 600SC



JLG Model 660SJC

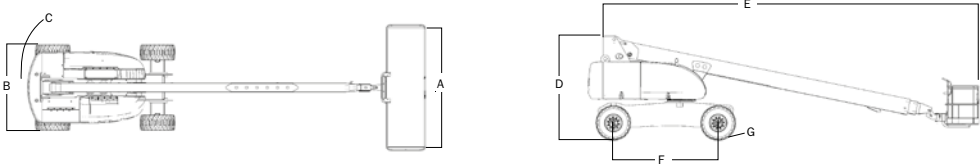
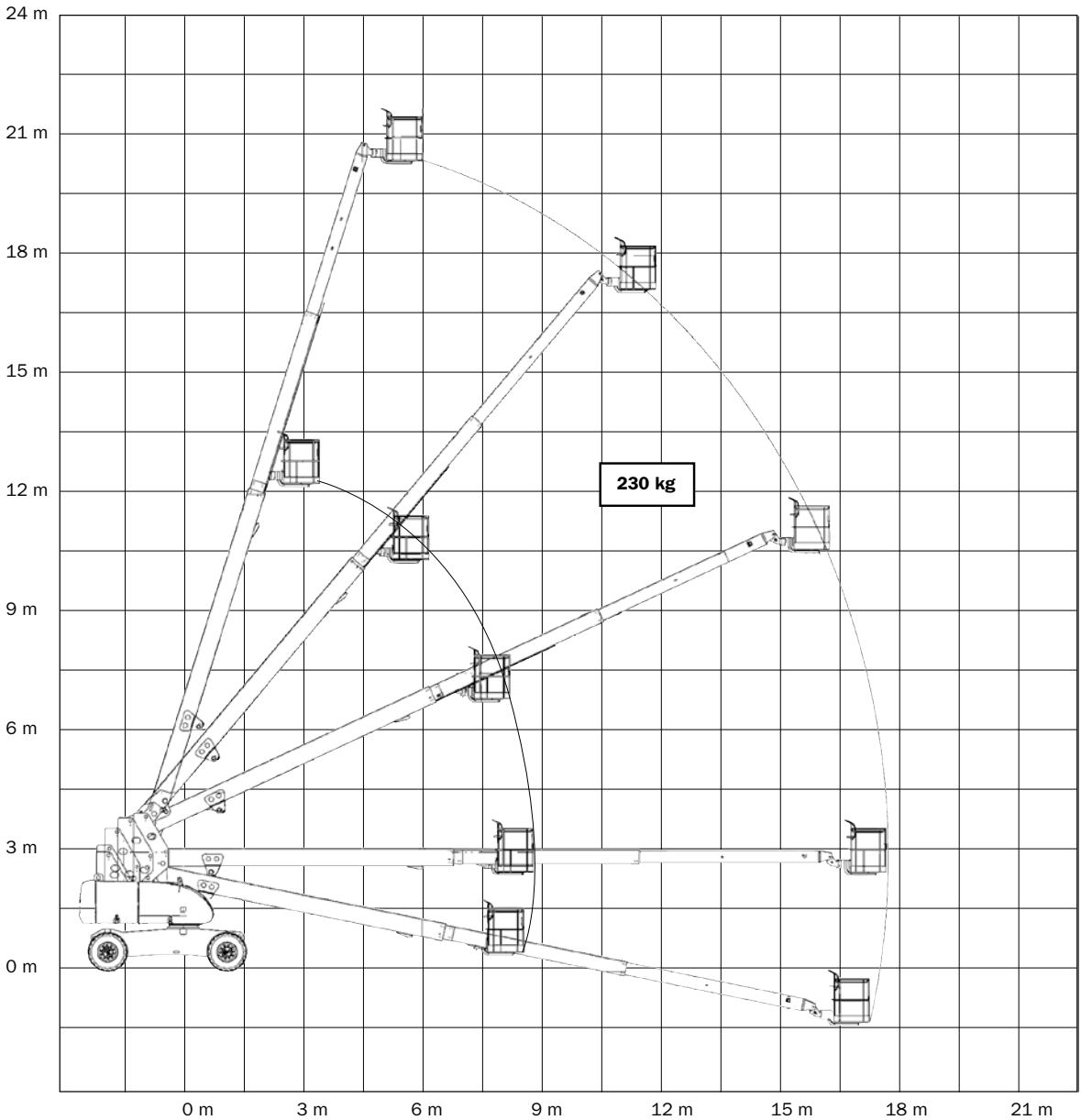


	680S
Working Height	22.73 m
Platform Height	20.73 m
Horizontal Outreach	18.00 m
Working Outreach *	18.65 m*
Swing (continuous)	360°
Platform Capacity - Unrestricted	230 kg
Platform Rotator (hydraulic)	170°
A. Platform Size	1.22 m x 4.06 m
B. Overall Width	2.49 m
C. Tailswing (working condition)	1.42 m
D. Stowed Height	3.02 m
E. Overall Length	12.23 m
F. Wheelbase	3.05 m
G. Ground Clearance	0.28 m
Machine weight ¹	15,950 kg
Maximum Ground Bearing Pressure	5.9 kg/cm²
Drive Speed	5.6 km/h
Tyres	18 - 625 Foam Filled
Axle Oscillation	0.20 m
Gradeability	45%
Turning Radius - Inside	3.81 m
Turning Radius - Outside	6.02 m
Diesel Engine - Deutz TD 2.9 L4	50 kW
Fuel Tank Capacity	117 L
Hydraulic System	227 L
Auxiliary Power	12V DC

* Working outreach is horizontal outreach plus 65cm.
¹ Certain options or country standards may increase weight and/or dimensions.



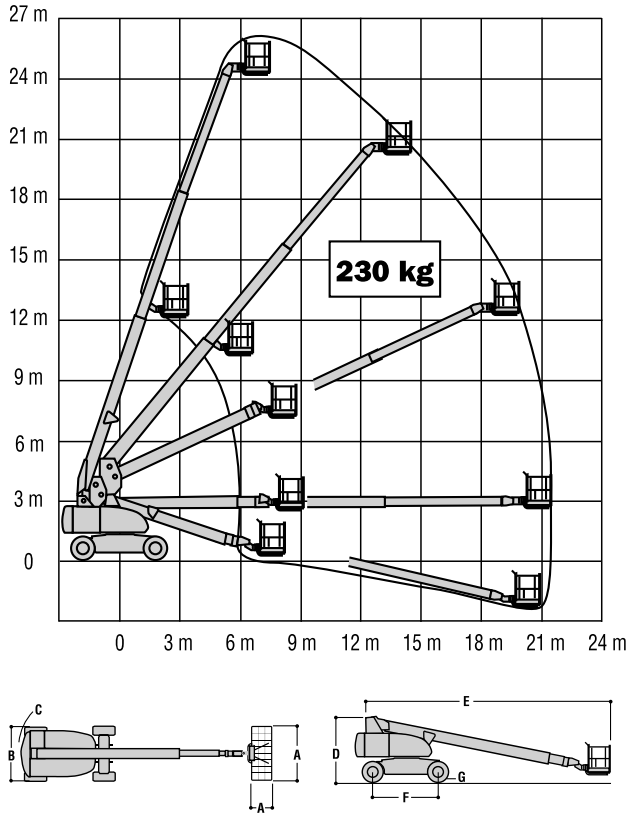
JLG Model 680S



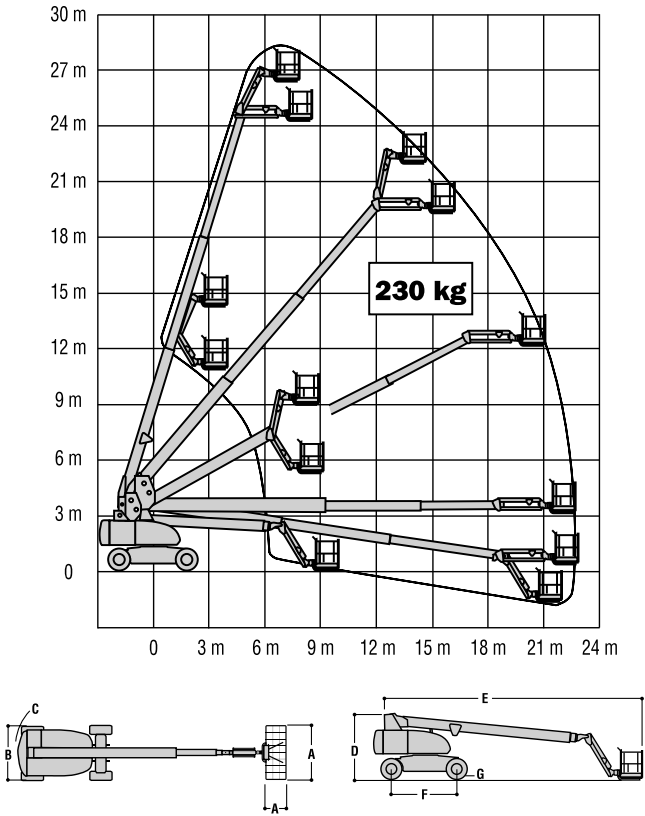
	800S	860SJ
Working Height	26.38 m	28.21 m
Platform Height	24.38 m	26.21 m
Horizontal Outreach	21.64 m	22.86 m
Working Outreach *	22.29 m*	23.51 m*
Swing (Continuous)	360°	360°
Platform Capacity - Unrestricted	230 kg	230 kg
Platform Rotator (Hydraulic)	180°	180°
Jib - Overall Length	—	1.83 m
Jib - Range of articulation	—	130° (+70°/-60°)
A. Platform Size	0.91 m x 2.44 m	0.91 m x 2.44 m
B. Overall Width	2.49 m	2.49 m
C. Tailswing (working condition)	1.42 m	1.42 m
D. Stowed Height	3.02 m	3.05 m
E. Stowed Length	11.35 m	12.19 m
F. Wheelbase	3.05 m	3.05 m
G. Ground Clearance	0.28 m	0.28 m
Machine weight ¹	15,800 kg	17,200 kg
Maximum Ground Bearing Pressure	5.6 kg/cm ²	6.5 kg/cm ²
Drive Speed 2WD	5.6 km/h	5.6 km/h
Drive Speed 4WD	5.6 km/h	5.6 km/h
Gradeability 2WD	30%	30%
Gradeability 4WD	45%	45%
Tyres	18 - 625 Foam Filled	18 - 625 Foam Filled
Axle Oscillation	0.20 m	0.20 m
Turning Radius - Inside	3.81 m	3.81 m
Turning Radius - Outside	6.02 m	6.02 m
Diesel Engine - Deutz TD 2.9 L4	50 kW	50 kW
Fuel Tank Capacity	117 L	117 L
Hydraulic System	235 L	235 L
Auxiliary Power	12V DC	12V DC

* Working outreach is horizontal outreach plus 65cm.
¹ Certain options or country standards may increase weight and/or dimensions.

JLG Model 800S

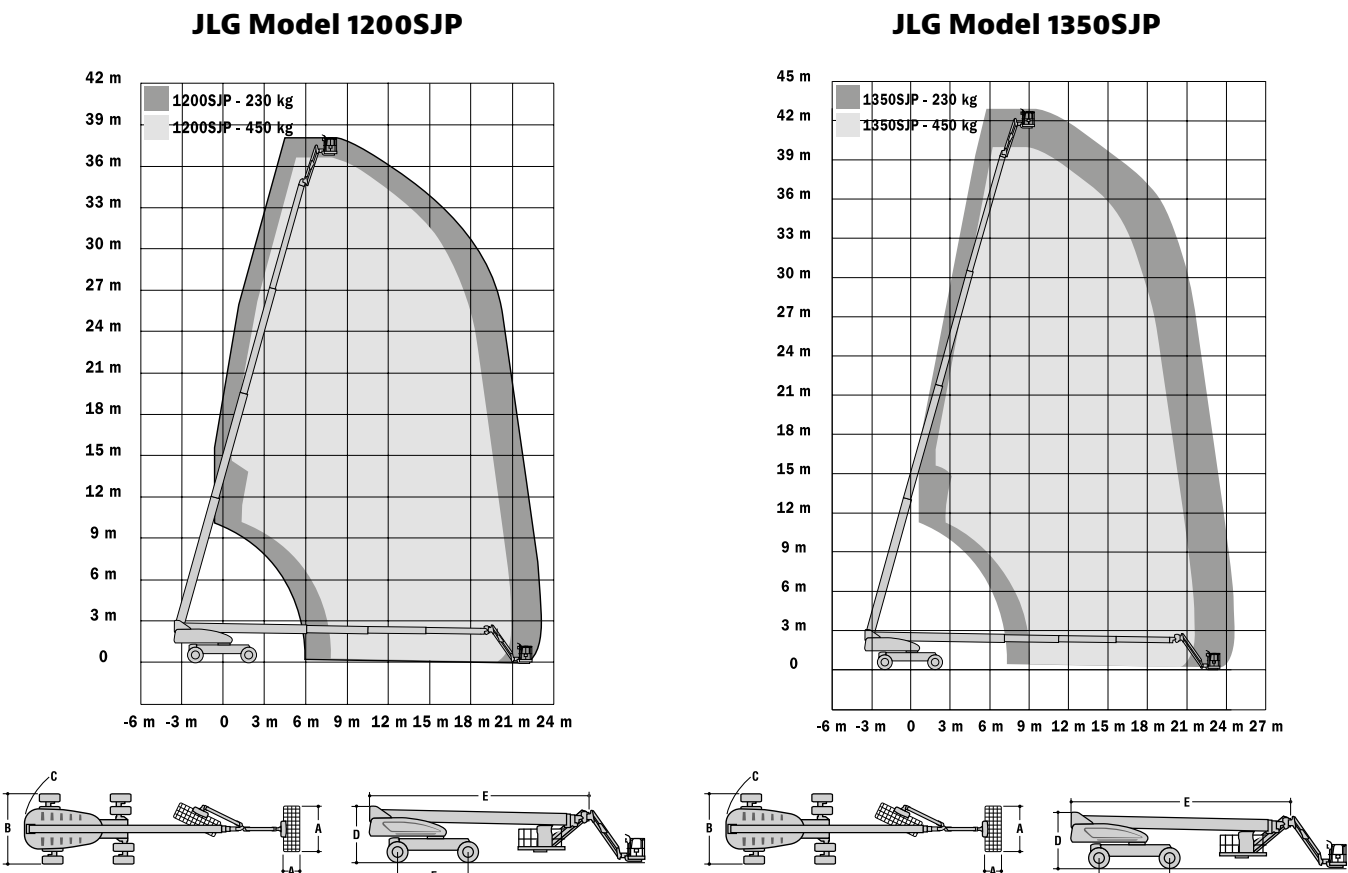


JLG Model 860SJ

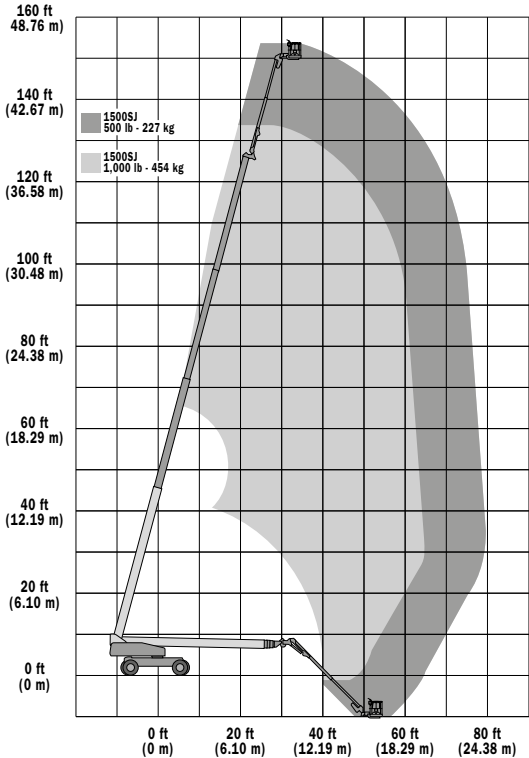


	1200SJP	1350SJP	1500SJ
Working Height	38.73 m	43.30 m	47.72 m
Platform Height	36.73 m	41.30 m	45.72 m
Horizontal Outreach	22.86 m	24.38 m	24.38 m
Working Outreach *	23.51 m*	25.03 m*	25.03 m*
Swing (Continuous)	360°	360°	360°
Platform Capacity - Restricted	450 kg	450 kg	450 kg
Platform Capacity - Unrestricted	230 kg	230 kg	230 kg
Platform Rotator (Hydraulic)	180°	180°	180°
Jib - Overall Length	2.44 m	2.44 m	—
Jib - Telescope : retracted	—	—	4.62 m
Jib - Telescope : extended	—	—	7.62 m
Jib - Range of articulation	130° Vertical (+75°/-55°)	130° Vertical (+75°/-55°)	120° Vertical (+75°/-45°)
JibPLUS® - Range of Articulation	180° Horizontal	180° Horizontal	—
A. Platform Size	0.91 m x 2.44 m	0.91 m x 2.44 m	0.91 m x 2.44 m
B. Overall Width (Axles Retracted)	2.49 m	2.49 m	2.49 m
Overall Width (Axles Extended)	3.81 m	3.81 m	3.81 m
C. Tailswing (working condition)	1.68 m	1.68 m	1.68 m
D. Stowed Height	3.05 m	3.05 m	3.05 m
E. Stowed Length	13.67 m	14.89 m	18.82 m
Transport length	10.64 m	11.86 m	13.11 m
F. Wheelbase	3.81 m	3.81 m	3.81 m
Ground Clearance	0.30 m	0.30 m	0.30 m
Machine weight ¹	18,500 kg	20,400 kg	22,000 kg
Maximum Ground Bearing Pressure	7.03 kg/cm ²	7.52 kg/cm ²	7.95 kg/cm ²
Drive Speed	5.2 km/h	5.2 km/h	4.8 km/h
Gradeability	45%	45%	40%
Tyres (Foam Filled)	445/50D710	445/50D710	445/50D710
Axle Oscillation	0.30 m	0.30 m	0.30 m
Turning Radius - Inside (Axles Retracted)	4.39 m	4.39 m	4.39 m
Turning Radius - Inside (Axles Extended)	2.44 m	2.44 m	2.44 m
Turning Radius - Outside (Axles Retracted)	6.86 m	6.86 m	6.86 m
Turning Radius - Outside (Axles Extended)	5.89 m	5.89 m	5.89 m
Diesel Engine - Deutz TCD2.9 L4	55.4 kW	55.4 kW	55.4 kW
Fuel Tank Capacity	117 L	117 L	117 L
Hydraulic System	250 L	250 L	250 L
Auxiliary Power	12V DC	12V DC	12V DC

* Working outreach is horizontal outreach plus 65cm.
¹ Certain options or country standards may increase weight and/or dimensions.



JLG Model 1500SJ

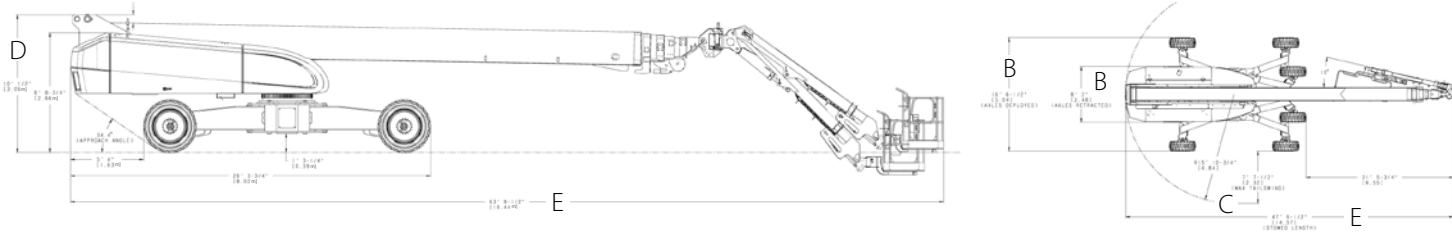
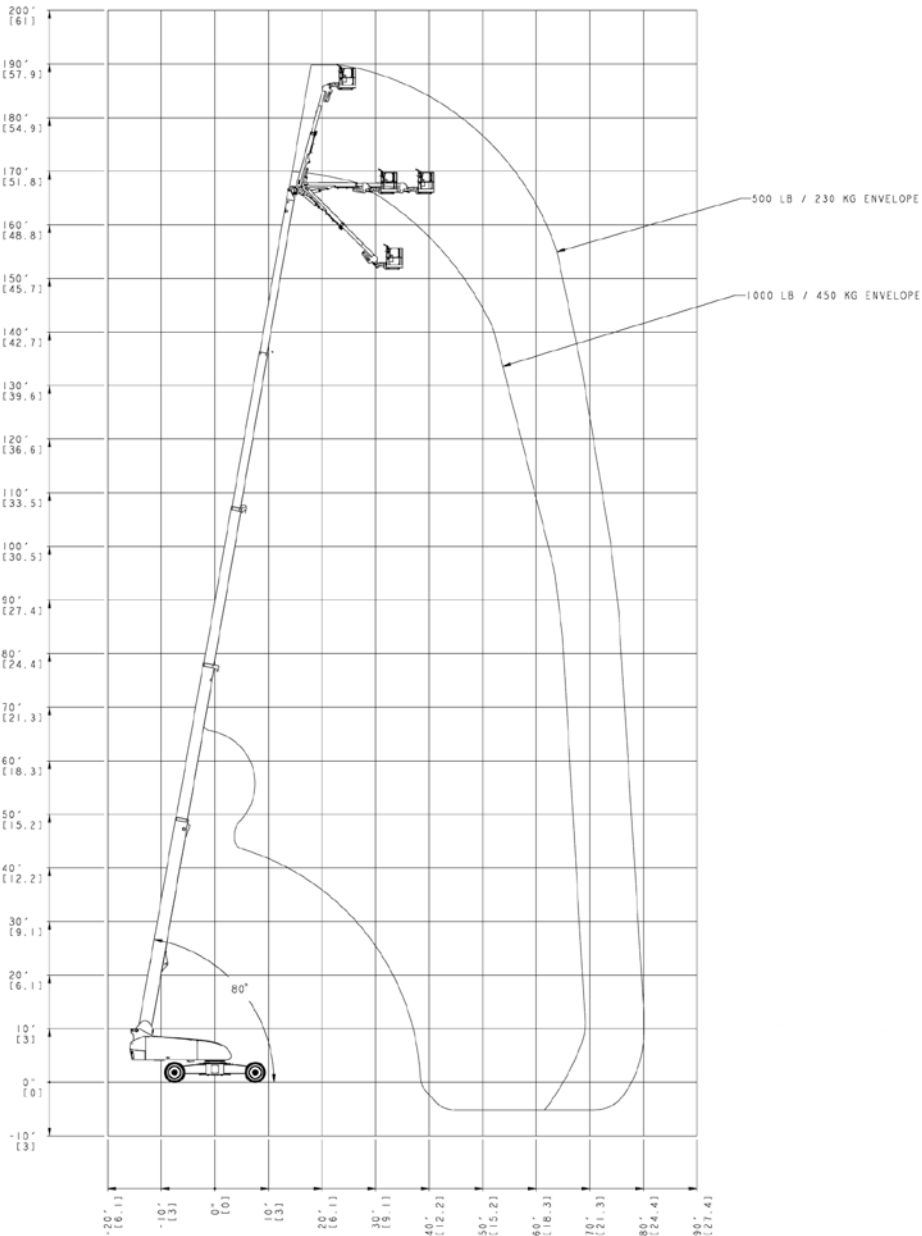


	1850SJ
Working Height	58.56 m
Platform Height	56.56 m
Horizontal Outreach	24.38 m
Working Outreach *	25.03 m*
Swing (Continuous)	360°
Platform Capacity - Restricted	450 kg
Platform Capacity - Unrestricted	230 kg
Platform Rotator (Hydraulic)	173°
Jib - Overall Length	—
Jib - Telescope : retracted	3.96 m
Jib - Telescope : extended	6.10 m
Jib - Range of articulation	120° Vertical (+75°/-45°)
A. Platform Size	0.91 m x 2.44 m
B. Overall Width (Axles Retracted)	2.49 m
Overall Width (Axles Extended)	5.03 m
C. Tailswing (working condition)	2.31 m
D. Stowed Height	3.05 m
E. Stowed Length	19.46 m
Transport length	14.58 m
F. Wheelbase (Axles Extended)	4.57 m
Ground Clearance	0.41 m
Machine weight ¹	27,360 kg
Maximum Ground Bearing Pressure	8.41 kg/cm²
Drive Speed	4.5 km/h
Gradeability	40%
Tyres	445/50D710 Foam Filled
Turning Radius - Inside (Axles Retracted)	7.11 m
Turning Radius - Inside (Axles Extended)	2.31 m
Turning Radius - Outside (Axles Retracted)	9.52 m
Turning Radius - Outside (Axles Extended)	6.60 m
Diesel Engine - Deutz TCD 3.6 L4	74.4 kW
Fuel Tank Capacity	200 L
Hydraulic System	284 L
Auxiliary Power	12V DC

* Working outreach is horizontal outreach plus 65cm.
¹ Certain options or country standards may increase weight and/or dimensions.



JLG Model 1850SJ

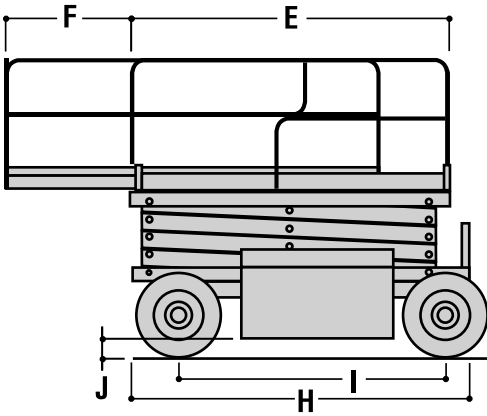
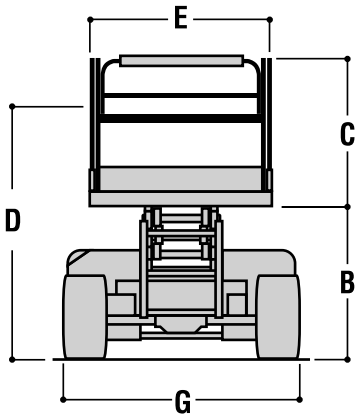
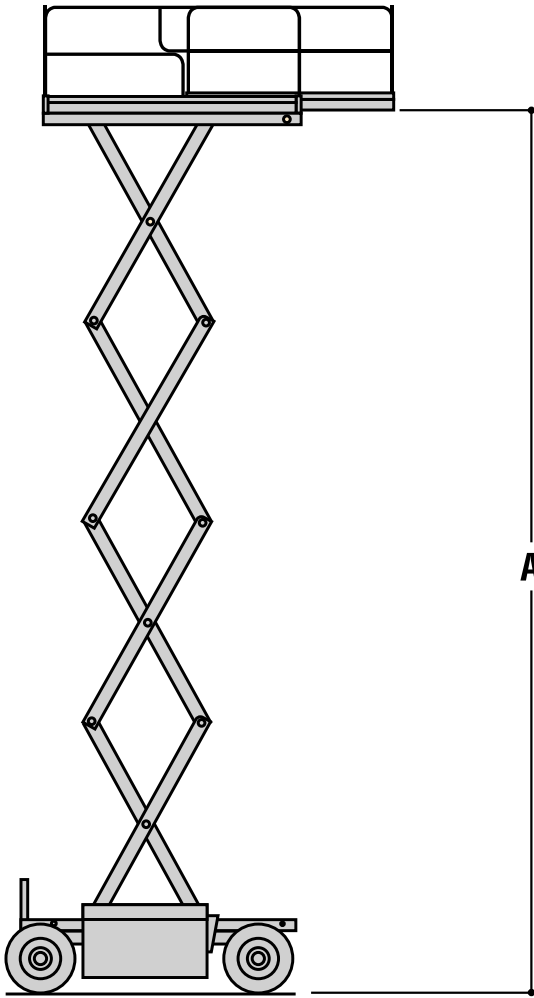


	260MRT
Working Height	9.92 m
A. Platform Height - Elevated	7.92 m
B. Platform Height - Lowered	1.26 m
C. Platform Railing Height	1.10 m
D. Stowed Height (Rails Folded)	1.47 m
E. Platform Size	1.65 m x 2.59 m
F. Deck Extension	1.22 m
G. Overall Width	1.75 m
H. Overall Length ¹	2.67 m
I. Wheelbase	1.98 m
J. Ground Clearance	0.20 m
Platform Capacity	570 kg
Capacity on Deck Extension	140 kg
Lift/Lower Time	37/24 sec.
Maximum Drive Height	7.92 m
Machine weight ²	3,390 kg
Maximum Ground Bearing Pressure	8.30 kg/cm²
Drive Speed - Lowered	5.6 km/h
Drive Speed - Elevated	0.8 km/h
Gradeability	35%
Turning Radius - Inside	2.13 m
Turning Radius - Outside	4.39 m
Tyres	26 x 12 Lug Tread
Brakes	Spring Applied Hydraulic
Power Source	Kubota D1005 17.5 kW
Fuel Tank Capacity	27 L
Hydraulic System	68 L

¹ Dimensions with optional levelling jacks are; Length 3.37 m, Width 1.79 m, Weight +360 kg.
² Certain options or country standards may increase weight and/or dimensions.



JLG Model 260MRT

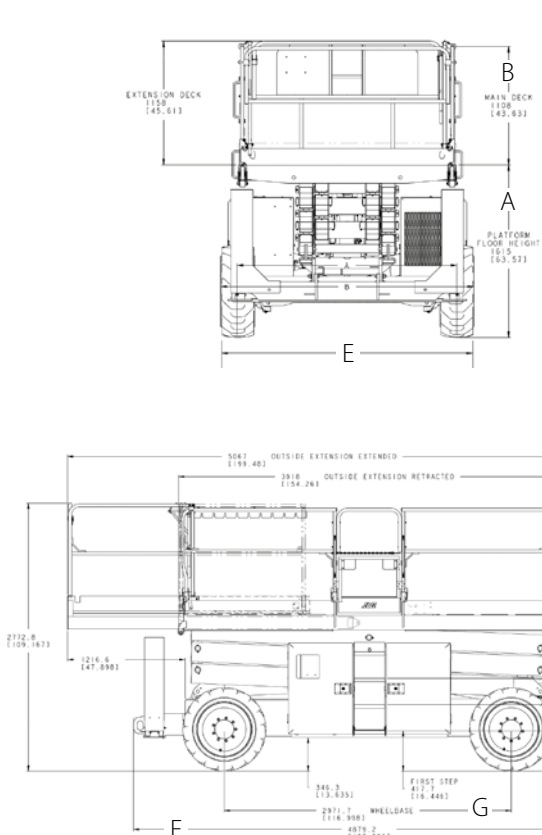


	330LRT	430LRT	530LRT
Working Height	12.00	15.11	18.15 m
Platform Height - Elevated	10.00	13.11	16.15 m
A. Platform Height - Lowered	1.62 m	1.84 m	2.02 m
B. Platform Railing Height	1.10 m	1.10 m	1.10 m
C. Stowed Height (Rails Folded)	2.17 m	2.39 m	2.41 m
D. Platform Size	1.79 m x 3.80 m	1.79 m x 3.80 m	1.91 m x 4.06 m
Front Deck Extension	1.22 m	1.22 m	1.14 m
Rear Deck Extension	1.22 m	1.22 m	1.14 m
Megadeck Platform Size	1.79 m x 7.14 m (incl. Extension 2 x 1.14 m)	—	1.81 m x 7.05 m (incl. Extension 2 x 1.14m)
E. Overall Width	2.31 m	2.31 m	2.31 m
F. Overall Length	4.88 m	4.88 m	4.88 m
G. Wheelbase	2.97 m	2.97 m	2.97 m
Ground Clearance	0.35 m	0.35 m	0.32 m
Platform Capacity	1022 kg*	680 kg**	680 kg
Capacity on Optional Deck Extension(s)	230 kg	230 kg	230 kg
Lift/Lower Time	35/37 sec.	45/47 sec.	65/60 sec.
Maximum Drive Height	Full drive height	10 m	9.75 m
Machine weight ¹	5,614 kg	7,155 kg	7,995 kg
Maximum Ground Bearing Pressure	1.996 kg	1.996 kg	2.500 kg
Drive Speed 4WD	5.6 km/h	5.6 km/h	5.6 km/h
Gradeability 4WD	45%	45%	40%
Turning Radius - Inside	2.70 m	2.70 m	4.04 m
Turning Radius - Outside	5.93 m	5.93 m	6.02 m
Axle Oscillation	0.20 m	0.20 m	0.20 m
Tyres	33 x 1550 - 16.5 Foam Filled	33 x 1550 - 16.5 Foam Filled	12 x 16.5 Foam Filled
Diesel Engine Kubota D1305	21.7 kW	21.7 kW	21.7 kW
Fuel Tank Capacity	83 L	83 L	83 L
Hydraulic System	129 L	129 L	129 L

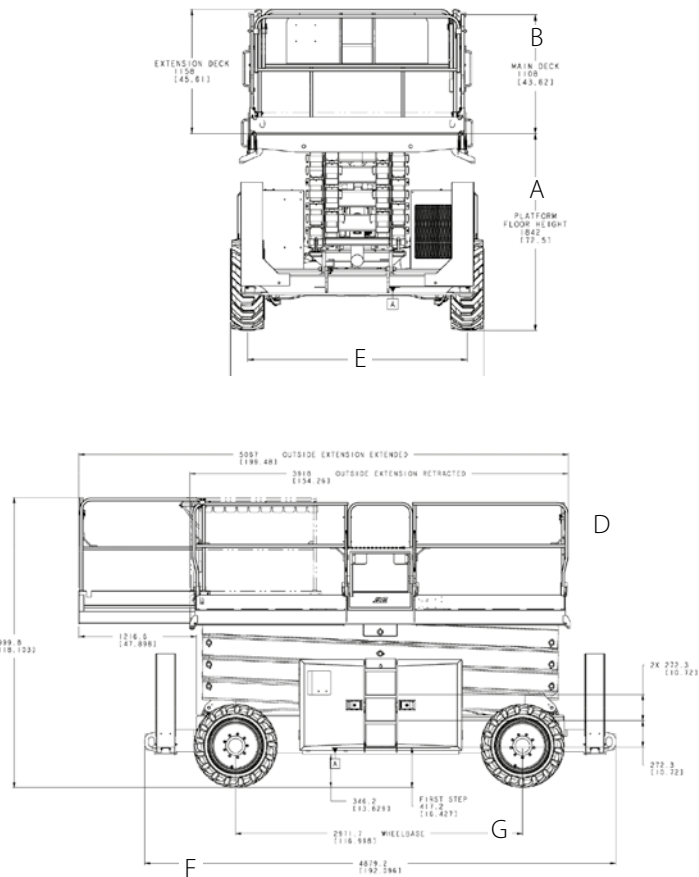
* Platform with single extension deck - Platform with dual extension deck: 905 kg
** Platform with single extension deck - Platform with dual extension deck: 565 kg
¹ Certain options or country standards may increase weight and/or dimensions.



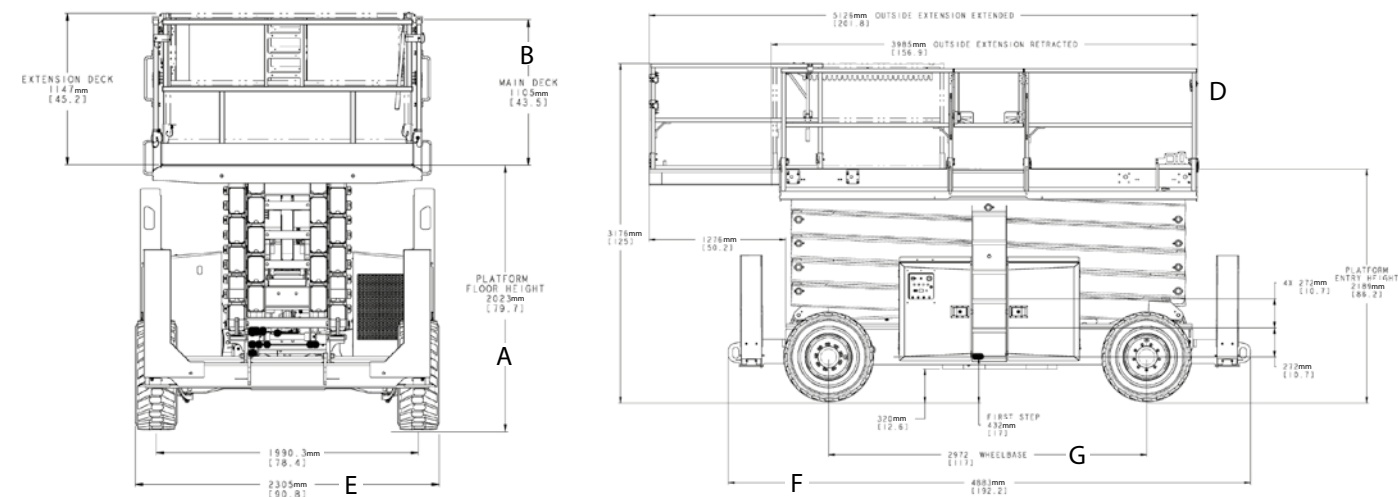
JLG Model 330LRT



JLG Model 430LRT



JLG Model 530LRT



	H340AJ
Platform	
0.76 m x 1.22 m low mount platform	○
0.76 m x 1.52 m low mount platform	●
Side entry with inward swing gate	○
Multiple function operation	●
Full proportional drive joystick control with integral thumb steer switch	●
Full proportional main boom and swing joystick control	●
Multiple speed control for lower boom, telescope and platform rotate	●
Selectable creep speed on drive / lift and swing functions	●
1.22 m articulating jib	●
180 degree powered platform rotator	●
Platform console machine status light panel ¹	●
Load sensing system	●
AC power cable to platform	●
13 mm air line to platform	○
Engine & Transmission	
Kubata Z482 (8.3 kW) diesel engine powered generator	●
8 x 12V AGM maintenance free battery pack	●
On-board 20 amp Automatic battery charger	●
Engine distress warning /shut down system ²	●
Gull wing steel turntable hoods	●
Swing-out engine tray	●
Control ADE® (Advanced Design Electronics) System	●
Brushless AC motor drive system	●
Four wheel drive	●
Horn	●
Functional Equipment & Accessories	
3 degree tilt alarm and indicator light	●
9 x 20 foam filled lug tread tyres	●
9 x 20 foam filled non marking tyres	○
7 x 18 solid flex tyres	○
7 x 18 solid flex non marking tyres	○
Oscillating front axle	●
Lifting/tie down lugs	●
On-board 3,000 W Inverter	○
Hour meter	●
Ground control selector switch with key lock	●
Programmable 4 digit security lock	○
All motion alarm	○
Light package ³	○
Platform worklights	○
Head & Tail Lights	○
Flashing amber beacon	○
Plugs & Sockets	○
Hostile environment package ⁴	○
Spark arresting catalytic purifier muffler	○
Skyguard with beacon	○
Skyguard without beacon	○
Low fuel engine cut-out	●
Platform tool tray	●
Corner storage tray	○
12V-DC auxiliary power	●

Standard ● Option ○ Not Available —

¹ Provides indicator lights at platform control console for system distress, low fuel, tilt light, and foot switch status.
² Low oil pressure and high coolant temperature alarms with shut-down enabled/disabled by analyser.
³ Includes platform mounted work lights and head & tail lights.
⁴ Includes console cover, boom wipers and cylinder bellows.



	340AJ
Platform	
0.76 m x 1.22 m low mount platform	○
0.76 m x 1.52 m low mount platform	●
Side entry with inward swing gate	○
Multiple function operation	●
Full proportional drive joystick control with integral thumb steer switch	●
Full proportional main boom and swing joystick control	●
Multiple speed control for lower boom, telescope and platform rotate	●
Selectable creep speed on drive / lift and swing functions	●
1.22 m articulating jib	●
180 degree powered platform rotator	●
Platform console machine status light panel ¹	●
Load sensing system	●
AC power cable to platform	●
13 mm air line to platform	○
Engine & Transmission	
Kubata D1105(18.65kW) diesel engine	●
Engine distress warning /shut down system ²	●
Gull wing steel turntable hoods	●
Swing-out engine tray	●
Spark arresting type muffler	●
Control ADE® (Advanced Design Electronics) System	●
Hydrostatic drive transmission	●
Four wheel drive	●
Horn	●
Functional Equipment & Accessories	
3 degree tilt alarm and indicator light	●
9 x 20 foam filled lug tread tyres	●
9 x 20 foam filled non marking tyres	○
7 x 18 solid flex tyres	○
7 x 18 solid flex non marking tyres	○
Oscillating front axle	●
Lifting/tie down lugs	●
On-board 4,000 W generator	○
Hour meter	●
Ground control selector switch with key lock	●
All motion alarm	○
Light package ³	○
Platform worklights	○
Head & Tail Lights	○
Flashing amber beacon	○
Plugs & Sockets	○
Hostile environment package ⁴	○
Catalytic purifier muffler	○
Skyguard with beacon	○
Skyguard without beacon	○
Low fuel engine cut-out	●
Platform tool tray	●
Corner storage tray	○
12V-DC auxiliary power	●

Standard ● Option ○ Not Available —

¹ Provides indicator lights at platform control console for system distress, low fuel, tilt light, and foot switch status.
² Low oil pressure and high coolant temperature alarms with shut-down enabled/disabled by analyser.
³ Includes platform mounted work lights and head & tail lights.
⁴ Includes console cover, boom wipers and cylinder bellows.

	450AJ	520AJ
Platform		
0.76 m x 1.22 m low mount platform	○	○
0.76 m x 1.52 m low mount platform	○	○
0.76 m x 1.83 m low mount platform	●	●
Side entry with drop bar mid rail	●	●
Side entry with inward swing gate	○	○
Multiple function operation	●	●
Full proportional drive joystick control with integral thumb steer switch	●	●
Full proportional main boom and swing joystick control	●	●
Multiple speed control for lower boom, telescope and platform rotate	●	●
Selectable creep speed on drive / lift and swing functions	●	●
1.24 m articulating jib	●	●
180 degree powered platform rotator	●	●
Platform console machine status light panel ¹	●	●
Load sensing system	●	●
AC power cable to platform	●	●
13 mm air line to platform	○	○
Engine & Transmission		
Deutz D2.3 L3 (36.4 kW) diesel engine	●	●
Engine distress warning /shut down system ²	●	●
Dura Tough turntable hoods	●	●
Swing-out engine tray	●	●
Spark arresting type muffler	●	●
Control ADE® (Advanced Design Electronics) System	●	●
Hydrostatic drive transmission	●	●
Four wheel drive	●	●
Horn	●	●
Functional Equipment & Accessories		
5 degree tilt alarm and indicator light	●	●
33/1550 x 16.5 superwide foam filled tyres	●	●
315/55 D20 foam filled tyres	○	○
315/55 D20 foam filled non marking tyres	○	○
Oscillating front axle	●	●
Lifting/tie down lugs	●	●
On-board 4,000 W generator	○	○
SkyPower® package 7,500 W on-board generator	○	○
Hour meter	●	●
Ground control selector switch with key lock	●	●
All motion alarm	○	○
Light package ³	○	○
Platform worklights	○	○
Head and tail lights	○	○
Flashing amber beacon	○	○
Plugs & Sockets	○	○
Hostile environment package ⁴	○	○
Hydraulic oil cooler	○	○
Catalytic purifier muffler	○	○
Skyguard with beacon	○	○
Skyguard without beacon	○	○
Platform tool tray	●	●
Corner storage tray	○	○
12V-DC auxiliary power	●	●

Standard ● Option ○ Not Available —

¹ Provides indicator lights at platform control console for system distress, low fuel, tilt light, and foot switch status.
² Low oil pressure and high coolant temperature alarms with shut-down enabled/disabled by analyser.
³ Includes platform mounted work lights and head & tail lights.
⁴ Includes console cover, boom wipers and cylinder bellows.

	600A	n600A	600AJ	n600AJ
Platform				
0.91 m x 1.83 m low mount platform	●	●	●	●
0.91 m x 2.44 m low mount platform	○	○	○	○
Side entry with drop bar mid rail	●	●	●	●
Side entry with inward swing gate	○	○	○	○
Multiple function operation	●	●	●	●
Full proportional drive joystick control with integral thumb steer switch	●	●	●	●
Full proportional main boom and swing joystick control	●	●	●	●
Multiple speed control for lower boom, telescope and platform rotate	●	●	●	●
Selectable creep speed on drive / lift and swing functions	●	●	●	●
1.83 m articulating jib	—	—	●	●
180 degree powered platform rotator	●	●	●	●
Platform console machine status light panel ¹	●	●	●	●
Load sensing system	●	●	●	●
AC power cable to platform	●	●	●	●
13 mm air line to platform	○	○	○	○
Engine & Transmission				
Deutz D2011L04 (36.4 kW) diesel engine	●	●	●	●
Engine distress warning /shut down system ²	●	●	●	●
Gull-wing turntable hoods	●	●	●	●
Swing-out engine tray	●	●	●	●
Spark arresting type muffler	○	○	○	○
Control ADE® (Advanced Design Electronics) System	●	●	●	●
Hydrostatic drive transmission	●	●	●	●
Four wheel drive	○	—	○	—
Four wheel steer/Two wheel steer/Crab steer ³	○	●	○	●
Horn	●	●	●	●
Functional Equipment & Accessories				
3 degree tilt alarm and indicator light	●	●	●	●
IN 355/55D 625 foam filled lug tread tyres	●	—	●	—
14 x 17.5 solid segmented Airboss tyres	—	●	—	●
Oscillating front axle	○	—	○	—
2.13 m narrow frame	—	●	—	●
Lifting/tie down lugs	●	●	●	●
On-board 4,000 W generator	○	○	○	○
SkyPower® package 7,500 W on-board generator	○	○	○	○
SkyWelder® package 250 amp welder in the platform ⁴	○	○	○	○
Nite-Bright® package ⁵	○	○	○	○
Hour meter	●	●	●	●
Ground control selector switch with key lock	●	●	●	●
Tow package	○	○	○	○
All motion alarm	○	○	○	○
Light package ⁶	○	○	○	○
Platform worklights	○	○	○	○
Head and tail lights	○	○	○	○
Flashing amber beacon	○	○	○	○
Plugs & Sockets	○	○	○	○
Hostile environment package ⁷	○	○	○	○
Hydraulic oil cooler	○	○	○	○
Catalytic purifier muffler	○	○	○	○
Skyguard with beacon	○	○	○	○
Skyguard without beacon	○	○	○	○
Platform tool tray	●	●	●	●
Soft Touch 0.91 m x 1.83 m Platform Proximity System	○	—	○	—
Soft Touch 0.91 m x 2.44 m Platform Proximity System	○	—	○	—
Corner storage tray	○	○	○	○
12V-DC auxiliary power	●	●	●	●

Standard ● Option ○ Not Available —

¹ Provides indicator lights at platform control console for system distress, low fuel, tilt light, and foot switch status.
² Low oil pressure and high coolant temperature alarms with shut-down enabled/disabled by analyser.
³ Only available with four wheel drive on models 600A and 600AJ with 2.49 m wide chassis and 800A and 800AJ.
 Only available with two wheel drive on models n600A and n600AJ with 2.13 m chassis.
⁴ Available when integrated with the SkyPower® package
⁵ Consists of six 40 W lights, four turntable mounted lights and two platform mounted lights.
⁶ Includes platform mounted work lights and head & tail lights.
⁷ Includes console cover, boom wipers and cylinder bellows.



	740AJ
Platform	
0.91 m x 1.83 m low mount fall arrest platform	●
Rear entry with hinged mid rail	●
Multiple function operation	●
Full proportional drive joystick control with integral thumb steer switch	●
Full proportional main boom and swing joystick control	●
Multiple speed control for lower boom, telescope and platform rotate	●
Selectable creep speed on drive, lift and swing functions	●
1.83 m articulating jib	●
180 degree powered platform rotator	●
Platform console machine status light panel ¹	●
Load sensing system	●
AC power cable to platform	●
13 mm Air line to platform	○
Engine & Transmission	
Deutz TD 2.9 L4 (50 kW) diesel engine	●
Engine distress warning / shut down system ²	●
Gull-wing turntable hoods	●
Swing-out engine tray	●
Spark arresting type muffler	●
Control ADE® (Advanced Design Electronics) System	●
Hydrostatic drive transmission	●
Four wheel drive	●
Four wheel steer / Two wheel steer / Crab steer	●
Horn	●
Functional Equipment & Accessories	
144 km/h jet blast rating to ARP 1328 standard	●
3 degree tilt alarm and indicator light	●
18-625 foam filled lug tread tyres	●
Fixed front axle	●
Lifting / tie down lugs	●
On-board 4,000 W generator	●
Hourmeter	●
Ground control selector switch with key lock	●
All motion alarm	○
Platform worklights	○
Flashing amber beacon	○
Plugs and Sockets	○
Hostile Environment Kit ³	○
Hydraulic oil cooler	○
Catalytic purifier muffler	●
Skyguard with beacon	○
Skyguard without beacon	○
Soft Touch 0.91 m x 1.83 m Platform Proximity System	○
Platform tool tray	●
Corner storage tray	○
12V-DC auxilliary power	●

Standard ● Option ○ Not Available —

¹ Provides indicator lights at platform control console for system distress, low fuel, tilt light and foot switch status.
² Low oil pressure and high coolant temperature alarms with shut down enabled / disabled by analyser
³ Includes console cover, boom wipers and cylinder bellows



	800A	800AJ
Platform		
0.91 m x 1.83 m low mount platform	●	●
0.91 m x 2.44 m low mount platform	○	○
Side entry with drop bar mid rail	●	●
Side entry with inward swing gate	○	○
Multiple function operation	●	●
Full proportional drive joystick control with integral thumb steer switch	●	●
Full proportional main boom and swing joystick control	●	●
Multiple speed control for telescope, lower boom and platform rotate	●	●
Selectable creep speed on drive / lift and swing functions	●	●
1.83 m articulating jib	—	●
180 degree powered platform rotator	●	●
Platform console machine status light panel ¹	●	●
Load sensing system	●	●
AC power cable to platform	●	●
13 mm air line to platform	○	○
Engine & Transmission		
Deutz TD 2.9 L4 (50 kW) diesel engine	●	●
Engine distress warning /shut down system ²	●	●
Gull-wing turntable hoods	●	●
Swing-out engine tray	○	○
Spark arresting type muffler	●	●
Control ADE® (Advanced Design Electronics) System	●	●
Hydrostatic drive transmission	●	●
Four wheel drive	○	○
Four wheel steer/Two wheel steer/Crab steer ³	○	○
Horn	●	●
Functional Equipment & Accessories		
QuikStik® boom design	●	●
3 degree tilt alarm and indicator light	●	●
18 - 625 foam filled lug tread tyres	●	●
Oscillating front axle	○	○
Load sensing boom function pump	●	●
Lifting/tie down lugs	●	●
On-board 4,000 W generator	○	○
SkyPower® package 7,500 W on-board generator	○	○
SkyWelder® package 250 amp welder in the platform ⁴	○	○
Hour meter	●	●
Ground control selector switch with key lock	●	●
Tow package	○	○
All motion alarm	○	○
Light package ⁵	○	○
Platform worklights	○	○
Head and tail lights	○	○
Flashing amber beacon	○	○
Plugs & Sockets	○	○
Hostile environment package ⁶	○	○
Hydraulic oil cooler	○	○
Catalytic purifier muffler	●	●
Skyguard with beacon	○	○
Skyguard without beacon	○	○
Soft Touch 0.91 m x 1.83 m Platform Proximity System	○	○
Soft Touch 0.91 m x 2.44 m Platform Proximity System	○	○
Platform tool tray	●	●
Corner storage tray	○	○
12V-DC auxiliary power	●	●

Standard ● Option ○ Not Available —

¹ Provides indicator lights at platform control console for system distress, low fuel, tilt light, and foot switch status.
² Low oil pressure and high coolant temperature alarms with shut-down enabled/disabled by analyser.
³ Only available with four wheel drive on models 800A and 800AJ.
⁴ Available when integrated with the SkyPower® package
⁵ Includes platform mounted work lights and head & tail lights.
⁶ Includes console cover, boom wipers and cylinder bellows.

	1250AJP	1500AJP
Platform		
0.91 m x 1.83 m low mount platform	○	○
0.91 m x 2.44 m low mount platform	●	●
Side entry with drop bar mid rail	●	●
Side entry with inward swing gate	○	○
Multiple function operation	●	●
Full proportional drive joystick control with integral thumb steer switch	●	●
Full proportional main boom and swing joystick control	●	●
Variable speed dial control for telescope, platform rotate and tower	●	●
2.44 m articulating jib	●	●
JibPLUS® with 4 way axis jib including 125 degree horizontal motion	●	●
Powered side stow on jib	●	●
180 degree powered platform rotator	●	●
Platform console machine status light panel ¹	●	●
Load sensing system	●	●
AC power cable to platform	●	●
13 mm air line to platform	○	○
Engine & Transmission		
Deutz TCD 2.9 L4 (55.4 kW) diesel engine	●	●
Engine distress warning system ²	○	○
Gull-wing turntable hoods	●	●
Swing-out engine tray	●	●
Spark arresting type muffler	●	●
Control ADE® - (Advanced Design Electronics System)	●	●
Adjustable swing drive	●	●
Hydrostatic transmission	●	●
Four wheel drive	●	●
Four wheel steer/Two Wheel Steer/Crab Steer	●	●
Horn	●	●
Functional Equipment & Accessories		
Selectable dual platform capacity system (230 kg/450 kg)	●	●
QuikStik® boom design feature	●	●
Drive-out extending axles	●	●
5 degree tilt alarm and indicator light	●	●
445/50D710 foam filled lug tread tyres	●	●
Oscillating front axle	●	●
Lifting/tie down lugs	●	●
On-board 4,000 W generator	○	○
SkyPower® package 7,500 W on-board generator	○	○
SkyWelder® package 250 amp welder in the platform ³	○	○
SkyGlazier® package glass and panel tray	○	○
Nite-Bright® package ⁴	○	○
Hour Meter	●	●
Ground control selector switch with key lock	●	●
Load Sensing Hydraulics	●	●
All motion alarm	○	○
Light package ⁵	○	○
Platform worklights	○	○
Head and tail lights	○	○
Flashing amber beacon	○	○
Plugs and sockets	○	○
Hostile environment package ⁶	○	○
Hydraulic oil cooler	○	○
Catalytic Purifier Muffler	●	—
Skyguard with beacon	○	○
Skyguard without beacon	○	●
Soft Touch 0.91 m x 1.83 m Platform Proximity System	○	○
Soft Touch 0.91 m x 2.44 m Platform Proximity System	○	○
Platform tool tray	●	●
Corner Storage tray	○	○
12V-DC auxiliary power	●	●
Standard ● Option ○ Not Available —		

¹ Provides indicator lights at platform control console for system distress, low fuel, 5 degree tilt light, and foot switch status.

² Low oil pressure and high coolant temperature alarms with shut-down enabled/disabled by analyser.

³ Available when integrated with the SkyPower® package.

⁴ Consists of six 40 W lights, four turntable mounted lights and two platform mounted lights.

⁵ Includes platform mounted work lights and head & tail lights.

⁶ Includes console cover, boom wipers and cylinder bellows.

	400S	460SJ
Platform		
0.91 m x 1.83 m low mount platform	●	●
0.91 m x 2.44 m low mount platform	○	○
Side entry with drop bar mid rail	●	●
Side entry with inward swing gate	○	○
Multiple function operation	●	●
Full proportional drive joystick control with integral thumb steer switch	●	●
Full proportional main boom and swing joystick control	●	●
Multiple speed control for telescope and platform rotate	●	●
Selectable creep speed on drive / lift and swing functions	●	●
1.83 m articulating jib	—	●
180 degree powered platform rotator	●	●
Platform console machine status light panel ¹	●	●
Load sensing system	●	●
AC cable to platform	●	●
13 mm air line to platform	○	○
Engine & Transmission		
Deutz D2.3 L3 (36.4 kW) diesel engine	●	●
Engine distress warning/shut down system ²	●	●
Dura Tough turntable hoods	●	●
Swing-out engine tray	●	●
Spark arresting type muffler	○	○
Control ADE® - Advanced Design Electronics System	●	●
Hydrostatic drive transmission	●	●
Four wheel drive	●	●
Horn	●	●
Functional Equipment & Accessories		
5 degree tilt alarm and indicator light	●	●
12 x 16.5 foam filled lug tread tyres	●	●
12 x 16.5 foam filled non marking tyres	○	○
14 x 17.5 foam filled lug tread tyres	○	○
Oscillating front axle	○	○
Lifting/tie down lugs	●	●
On-board 4,000 W generator	○	○
SkyPower® package 7,500 W on-board generator	○	○
SkyWelder® package 250 amp welder in the platform ³	○	○
Nite-Bright® package ⁴	○	○
Hour meter	●	●
Ground control selector switch with key lock	●	●
Tow Package	○	○
All motion alarm	○	○
Light package ⁵	○	○
Platform worklights	○	○
Head and tail lights	○	○
Flashing amber beacon	○	○
Plugs & Sockets	○	○
Hostile environment package ⁶	○	○
Hydraulic oil cooler	○	○
Catalytic Purifier Muffler	○	○
Skyguard with beacon	○	○
Skyguard without beacon	○	○
Soft Touch 0.91 m x 1.83 m Platform Proximity System	○	○
Soft Touch 0.91 m x 2.44 m Platform Proximity System	○	○
Platform tool tray	●	●
Corner storage tray	○	○
12V-DC auxiliary power	●	●
Standard ● Option ○ Not Available —		

¹ Provides indicator lights at platform control console for system distress, low fuel, tilt light, and foot switch status.

² Low oil pressure and high coolant temperature alarms with shut-down enabled/disabled by analyser.

³ Available when integrated with the SkyPower® package.

⁴ Consists of six 40 W lights, four turntable mounted lights and two platform mounted lights.

⁵ Includes platform mounted work lights and head & tail lights.

⁶ Includes console cover, boom wipers and cylinder bellows.



	400SC	460SJ
Platform		
0.91 m x 1.83 m low mount platform	●	●
0.91 m x 2.44 m low mount platform	○	○
Side entry with drop bar mid rail	●	●
Side entry with inward swing gate	○	○
Multiple function operation	●	●
Full proportional drive joystick control with integral thumb steer switch	●	●
Full proportional main boom and swing joystick control	●	●
Multiple speed control for telescope and platform rotate	●	●
Selectable creep speed on drive / lift and swing functions	●	●
180 degree powered platform rotator	●	●
Platform console machine status light panel ¹	●	●
Load sensing system	●	●
AC cable to platform	●	●
13 mm air line to platform	○	○
Engine & Transmission		
Deutz D2.3 L3 (36.4 kW) diesel engine	●	●
Engine distress warning/shut down system ²	●	●
Dura Tough turntable hoods	●	●
Swing-out engine tray	●	●
Spark arresting type muffler	○	○
Control ADE® - Advanced Design Electronics System	●	●
Hydrostatic drive transmission	●	●
Horn	●	●
Functional Equipment & Accessories		
5 degree tilt alarm and indicator light	●	●
0.40 m x 2.77 m x 0.55 m rubber tracks	●	●
Lifting/tie down lugs	●	●
On-board 4,000 W generator	○	○
SkyPower® package 7,500 W on-board generator	○	○
SkyWelder® package 250 amp welder in the platform ³	○	○
Nite-Bright® package ⁴	○	○
Hour meter	●	●
Ground control selector switch with key lock	●	●
All motion alarm	○	○
Light package ⁵	○	○
Platform worklights	○	○
Head and tail lights	○	○
Flashing amber beacon	○	○
Plugs & Sockets	○	○
Hostile environment package ⁶	○	○
Hydraulic oil cooler	●	●
Catalytic Purifier Muffler	○	○
Skyguard with beacon	○	○
Skyguard without beacon	○	○
Soft Touch 0.91 m x 1.83 m Platform Proximity System	○	○
Soft Touch 0.91 m x 2.44 m Platform Proximity System	○	○
Platform tool tray	●	●
Corner storage tray	○	○
12V-DC auxiliary power	●	●

Standard ● Option ○ Not Available —

¹ Provides indicator lights at platform control console for system distress, low fuel, tilt light, and foot switch status.
² Low oil pressure and high coolant temperature alarms with shut-down enabled/disabled by analyser.
³ Available when integrated with the SkyPower® package.
⁴ Consists of six 40 W lights, four turntable mounted lights and two platform mounted lights.
⁵ Includes platform mounted work lights and head & tail lights.
⁶ Includes console cover, boom wipers and cylinder bellows.

	600S	660SJ
Platform		
0.91 m x 1.83 m low mount platform	●	●
0.91 m x 2.44 m low mount platform	○	○
Side entry with drop bar mid rail	●	●
Side entry with inward swing gate	○	○
Multiple function operation	●	●
Full proportional drive joystick control with integral thumb steer switch	●	●
Full proportional main boom and swing joystick control	●	●
Multiple speed control for telescope and platform rotate	●	●
Selectable creep speed on drive / lift and swing functions	●	●
1.83 m articulating jib	—	●
160 degree powered platform rotator	●	—
180 degree powered platform rotator	—	●
Platform console machine status light panel ¹	●	●
Load sensing system	●	●
AC cable to platform	●	●
13 mm air line to platform	○	○
Engine & Transmission		
Deutz D2011L04 (36.4 kW) diesel engine	●	●
Engine distress warning/shut down system ²	●	●
Gull-wing hoods	●	●
Sheet metal hoods	—	—
Swing-out engine tray	●	●
Spark arresting type muffler	○	○
Control ADE® - Advanced Design Electronics System	●	●
Hydrostatic drive transmission	●	●
Four wheel drive	●	●
Four Wheel Steer/Two Wheel Steer/Crab Steer	○	○
Horn	●	●
Functional Equipment & Accessories		
3 degree tilt alarm and indicator light	●	●
39 x 15-22.5 foam filled lug tread tyres	●	●
15 x 19.5 foam filled non marking tyres	○	○
Oscillating front axle	●	●
Lifting/tie down lugs	●	●
On-board 4,000 W generator	○	○
SkyPower® package 7,500 W on-board generator	○	○
SkyWelder® package 250 amp welder in the platform ³	○	○
Nite-Bright® package ⁴	○	○
Hour meter	●	●
Ground control selector switch with key lock	●	●
Tow Package	○	○
All motion alarm	○	○
Light package ⁵	○	○
Platform worklights	○	○
Head and tail lights	○	○
Flashing amber beacon	○	○
Plugs & Sockets	○	○
Hostile environment package ⁶	○	○
Hydraulic oil cooler	○	○
Catalytic Purifier Muffler	○	○
Skyguard with beacon	○	○
Skyguard without beacon	○	○
Soft Touch 0.91 m x 1.83 m Platform Proximity System	○	○
Soft Touch 0.91 m x 2.44 m Platform Proximity System	○	○
Platform tool tray	●	●
Corner storage tray	○	○
12V-DC auxiliary power	●	●

Standard ● Option ○ Not Available —

¹ Provides indicator lights at platform control console for system distress, low fuel, tilt light, and foot switch status.
² Low oil pressure and high coolant temperature alarms with shut-down enabled/disabled by analyser.
³ Available when integrated with the SkyPower® package.
⁴ Consists of six 40 W lights, four turntable mounted lights and two platform mounted lights.
⁵ Includes platform mounted work lights and head & tail lights.
⁶ Includes console cover, boom wipers and cylinder bellows.

	600SC	660SJC
Platform		
0.91 m x 1.83 m low mount platform	●	●
0.91 m x 2.44 m low mount platform	○	○
Side entry with drop bar mid rail	●	●
Side entry with inward swing gate	○	○
Multiple function operation	●	●
Full proportional drive joystick control with integral thumb steer switch	●	●
Full proportional main boom and swing joystick control	●	●
Multiple speed control for telescope and platform rotate	●	●
Selectable creep speed on drive / lift and swing functions	●	●
1.83 m articulating jib	—	●
160 degree powered platform rotator	●	—
180 degree powered platform rotator	—	●
Platform console machine status light panel ¹	●	●
Load sensing system	●	●
AC cable to platform	●	●
13 mm air line to platform	○	○
Engine & Transmission		
Deutz TD 2.9 L4 (50 kW) diesel engine	●	●
Engine distress warning/shut down system ²	●	●
Gull-wing hoods	●	●
Swing-out engine tray	●	●
Spark arresting type muffler	○	○
Control ADE® - Advanced Design Electronics System	●	●
Hydrostatic drive transmission	●	●
Horn	●	●
Functional Equipment & Accessories		
3 degree tilt alarm and indicator light	●	●
Steel tracks	●	●
Detachable rubber track pads	○	○
Lifting/tie down lugs	●	●
On-board 4,000 W generator	○	○
SkyPower® package 7,500 W on-board generator	○	○
SkyWelder® package 250 amp welder in the platform ³	○	○
Hour meter	●	●
Ground control selector switch with key lock	●	●
All motion alarm	○	○
Light package ⁴	○	○
Platform worklights	○	○
Head and tail lights	○	○
Flashing amber beacon	○	○
Plugs & Sockets	○	○
Hostile environment package ⁵	○	○
Hydraulic oil cooler	●	●
Catalytic Purifier Muffler	●	●
Skyguard with beacon	○	○
Skyguard without beacon	○	○
Platform tool tray	●	●
Corner storage tray	○	○
12V-DC auxiliary power	●	●

Standard ● Option ○ Not Available —

¹ Provides indicator lights at platform control console for system distress, low fuel, tilt light, and foot switch status.
² Low oil pressure and high coolant temperature alarms with shut-down enabled/disabled by analyser.
³ Available when integrated with the SkyPower® package.
⁴ Includes platform mounted work lights and head & tail lights.
⁵ Includes console cover, boom wipers and cylinder bellows.

	680S
Platform	
1.22 m x 4.06 m low mount platform	●
Dual Side entry with inward swing gate	●
Multiple function operation	●
Full proportional drive joystick control with integral thumb steer switch	●
Full proportional main boom and swing joystick control	●
Multiple speed control for telescope and platform rotate	●
Selectable creep speed on drive / lift and swing functions	●
170 degree powered platform rotator	●
Platform console machine status light panel ¹	●
Load sensing system	●
AC cable to platform	●
13 mm air line to platform	○
Engine & Transmission	
Deutz TD 2.9 L4 (50 kW) diesel engine	●
Engine distress warning/shut down system ²	●
Gull-wing hoods	●
Swing-out engine tray	●
Spark arresting type muffler	○
Control ADE® - Advanced Design Electronics System	●
Hydrostatic drive transmission	●
Four wheel drive	●
Horn	●
Functional Equipment & Accessories	
4 degree tilt alarm and indicator light	●
18 - 625 foam filled lug tread tyres	●
Oscillating front axle	●
Fixed-width frame (extending axles not required)	●
Load sensing boom function pump	●
Lifting/tie down lugs	●
On-board 4,000 W generator	○
SkyPower® package 7,500 W on-board generator	○
Hour meter	●
Ground control selector switch with key lock	●
All motion alarm	○
Head and tail lights	○
Flashing amber beacon	○
Plugs & Sockets	○
Hostile environment package ³	○
Hydraulic oil cooler	○
Catalytic Purifier Muffler	●
Skyguard with beacon	○
Skyguard without beacon	○
Platform tool tray	○
Corner storage tray	○
12V-DC auxiliary power	●

Standard ● Option ○ Not Available —

¹ Provides indicator lights at platform control console for system distress, low fuel, tilt light, and foot switch status.
² Low oil pressure and high coolant temperature alarms with shut-down enabled/disabled by analyser.
³ Includes console cover, boom wipers and cylinder bellows.

	800S	860SJ
Platform		
0.91 m x 1.83 m low mount platform	○	○
0.91 m x 2.44 m low mount platform	●	●
Side entry with drop bar mid rail	●	●
Side entry with inward swing gate	○	○
Multiple function operation	●	●
Full proportional drive joystick control with integral thumb steer switch	●	●
Full proportional main boom and swing joystick control	●	●
Multiple speed control for telescope and platform rotate	●	●
Selectable creep speed on drive / lift and swing functions	●	●
1.83 m articulating jib	—	●
180 degree powered platform rotator	●	●
Platform console machine status light panel ¹	●	●
Load sensing system	●	●
AC cable to platform	●	●
13 mm air line to platform	○	○
Engine & Transmission		
Deutz TD 2.9 L4 (50 kW) diesel engine	●	●
Engine distress warning/shut down system ²	●	●
Gull-wing hoods	●	●
Sheet metal hoods	○	○
Swing-out engine tray	●	●
Spark arresting type muffler	○	○
Control ADE® - Advanced Design Electronics System	●	●
Hydrostatic drive transmission	●	●
Four wheel drive	○	○
Horn	●	●
Functional Equipment & Accessories		
4 degree tilt alarm and indicator light	●	●
18 - 625 foam filled lug tread tyres	●	●
Oscillating front axle	○	○
Fixed-width frame (extending axles not required)	●	●
Load sensing boom function pump	●	●
Lifting/tie down lugs	●	●
On-board 4,000 W generator	○	○
SkyPower® package 7,500 W on-board generator	○	○
SkyWelder® package 250 amp welder in the platform ³	○	○
Nite-Bright® package ⁴	○	○
Hour meter	●	●
Ground control selector switch with key lock	●	●
All motion alarm	○	○
Light package ⁵	○	○
Platform worklights	○	○
Head and tail lights	○	○
Flashing amber beacon	○	○
Plugs & Sockets	○	○
Hostile environment package ⁶	○	○
Hydraulic oil cooler	○	○
Catalytic Purifier Muffler	●	●
Skyguard with beacon	○	○
Skyguard without beacon	○	○
Platform tool tray	●	●
Corner storage tray	○	○
12V-DC auxiliary power	●	●
Standard ● Option ○ Not Available —		

¹ Provides indicator lights at platform control console for system distress, low fuel, tilt light, and foot switch status.
² Low oil pressure and high coolant temperature alarms with shut-down enabled/disabled by analyser.
³ Available when integrated with the SkyPower® package.
⁴ Consists of six 40 W lights, four turntable mounted lights and two platform mounted lights.
⁵ Includes platform mounted work lights and head & tail lights.
⁶ Includes console cover, boom wipers and cylinder bellows.

	1200SJP	1350SJP	1500SJ
Platform			
0.91 m x 1.83 m low mount platform	○	○	○
0.91 m x 2.44 m low mount platform	●	●	●
Side entry with drop bar mid rail	●	●	●
Side entry with inward swing gate	○	○	○
Multiple function operation	●	●	●
Full proportional drive joystick control with integral thumb steer switch	●	●	●
Full proportional main boom and swing joystick control	●	●	●
Variable speed dial control for telescope and platform rotate	●	●	●
2.44 m articulating jib	●	●	—
JibPLUS® with 4 way axis jib including 180 degree horizontal motion	●	●	—
4.6 m to 7.6 m Telescoping jib	—	—	●
Powered side stow on jib	●	●	●
180 degree powered platform rotator	●	●	●
Platform console machine status light panel ¹	●	●	●
Load sensing system	●	●	●
AC cable to platform	●	●	●
13 mm air line to platform	○	○	○
Engine & Transmission			
Deutz TCD2.9 L4 (55.4 kW) diesel engine	●	●	●
Engine distress warning/shut down system ²	○	○	○
Gull-wing hoods	●	●	●
Swing-out engine tray	●	●	●
Spark arresting type muffler	●	●	●
Control ADE® (Advanced Design Electronics) System	●	●	●
Adjustable swing drive	●	●	●
Hydrostatic transmission	●	●	●
Four wheel drive	●	●	●
Four wheel steer/two wheel steer/crab steer	●	●	●
Horn	●	●	●
Functional Equipment & Accessories			
Selectable dual platform capacity system (230 kg/450 kg)	●	●	●
Drive-out extending axles	●	●	●
5 degree tilt alarm and indicator light	●	●	—
4 degree tilt alarm and indicator light	—	—	●
445/50D710 foam filled lug tread tyres	●	●	●
Oscillating front axle	●	●	●
Lifting/tie down lugs	●	●	●
On-board 4,000 W generator	○	○	—
SkyPower® package 7,500 W on-board generator	○	○	○
SkyWelder® package 250 amp welder in the platform ³	○	○	○
SkyGlazier® package glass and panel tray	○	○	○
Nite-Bright® package ⁴	○	○	○
Hour meter	●	●	●
Ground control selector switch with key lock	●	●	●
Load sensing hydraulics	●	●	●
All motion alarm	○	○	○
Light package ⁵	○	○	○
Platform worklights	○	○	○
Head and tail lights	○	○	○
Flashing amber beacon	○	○	○
Plugs & Sockets	○	○	○
Hostile environment package ⁶	○	○	○
Hydraulic oil cooler	○	○	○
Catalytic purifier muffler	●	●	●
Skyguard with beacon	○	○	○
Skyguard without beacon	○	○	○
Soft Touch 0.91 m x 1.83 m Platform Proximity System	○	○	○
Soft Touch 0.91 m x 2.44 m Platform Proximity System	○	○	○
Platform tool tray	●	●	●
Corner storage tray	○	○	○
12V-DC auxiliary power	●	●	●
Standard ● Option ○ Not Available —			

¹ Provides indicator lights at platform control console for system distress, low fuel, 5 degree tilt light, and foot switch status.
² Low oil pressure and high coolant temperature alarms with shut-down enabled/disabled by analyser.
³ Available when integrated with the SkyPower® package.
⁴ Consists of six 40 W lights, four turntable mounted lights and two platform mounted lights.
⁵ Includes platform mounted work lights and head & tail lights.
⁶ Includes console cover, boom wipers and cylinder bellows.

	1850SJ
Platform	
0.91 m x 2.44 m low mount platform	●
Side entry with drop bar mid rail	●
Side entry with inward swing gate	○
Multiple function operation	●
Full proportional drive joystick control with integral thumb steer switch	●
Full proportional main boom and swing joystick control	●
Variable speed dial control for telescope and platform rotate	●
3.96 m to 6.10 m Telescoping jib	●
Powered side stow on jib	●
180 degree powered platform rotator	●
Platform console machine status light panel ¹	●
Load sensing system	●
AC cable to platform	●
13 mm air line to platform	○
Engine & Transmission	
Deutz TCD 3.6 L4 (74.4 kW) diesel engine	●
Engine distress warning/shut down system ²	○
Gull-wing hoods	●
Swing-out engine tray	●
Spark arresting type muffler	●
Control ADE® (Advanced Design Electronics) System	●
Adjustable swing drive	●
Hydrostatic transmission	●
Four wheel drive	●
Four wheel steer/two wheel steer/crab steer	●
Horn	●
Functional Equipment & Accessories	
Selectable dual platform capacity system (230 kg/450 kg)	●
Drive-out extending axles	●
4 degree tilt alarm and indicator light	●
445/50D710 foam filled lug tread tyres	●
Lifting/tie down lugs	●
SkyPower® package 7,500 W on-board generator	○
SkyWelder® package 250 amp welder in the platform ³	○
SkyGlazier® package glass and panel tray	○
Nite-Bright® package ⁴	○
Hour meter	●
Ground control selector switch with key lock	●
Load sensing hydraulics	●
All motion alarm	○
Light package ⁵	○
Platform worklights	○
Head and tail lights	○
Flashing amber beacon	○
Plugs & Sockets	○
Hostile environment package ⁶	○
Hydraulic oil cooler	○
Catalytic purifier muffler	●
Soft Touch 0.91 m x 1.83 m Platform Proximity System	○
Soft Touch 0.91 m x 2.44 m Platform Proximity System	○
Skyguard with beacon	○
Skyguard without beacon	○
Platform tool tray	●
Corner storage tray	○
12V-DC auxiliary power	●
Standard ● Option ○ Not Available —	

¹ Provides indicator lights at platform control console for system distress, low fuel, tilt light, and foot switch status.
² Low oil pressure and high coolant temperature alarms with shut-down enabled/disabled by analyser.
³ Available when integrated with the SkyPower® package.
⁴ Consists of six 40 W lights, four turntable mounted lights and two platform mounted lights.
⁵ Includes platform mounted work lights and head & tail lights.
⁶ Includes console cover, boom wipers and cylinder bellows.

	260MRT
Platform	
1.65 m x 2.59 m steel platform (deck extension retracted)	●
1.22 m manual front deck extension	●
Fold down handrails	●
Self-closing gate	●
Lanyard attach points	●
Proportional drive control with thumb steer	●
Proportional lift/lower speed control	●
Joystick enable for lift and drive	●
Moveable and removable platform console box	●
Load sensing system	●
Engine & Transmission	
Kubota D1005 (17.5 kW) diesel engine	●
Programmable "Personality" settings	●
On-board self-diagnostic testing	●
Engine distress warning/shut down system ¹	●
Hydrostatic drive with anti stall function	●
Two speed drive selection	●
Four wheel drive	●
Functional Equipment & Accessories	
3 degree tilt alarm and indicator light	●
Steel scissor guards	●
26 x 12 foam filled loader lug tread tyres	●
Hydraulic levelling jacks	○
Lifting/tie down lugs	●
Hour meter	●
Ground control selector switch with key lock	●
Lubrication free scissor arm bushings	●
Scissor maintenance prop	●
Horn	●
Descent alarm	○
All motion alarm	○
AC power cable to platform	●
13 mm air line to platform	○
Platform work lights ²	○
Flashing amber beacon	○
Plugs & Sockets	○
Cylinder bellows	○

Standard ● Option ○ Not Available —

¹ Low oil pressure and high coolant temperature alarms with shut-down enabled/disabled by analyser.
² Includes four 40 W platform mounted halogen floodlights

	330LRT	430LRT	530LRT
Platform			
1.91 m x 4.06 m steel platform (deck extensions retracted)	●	●	●
1.22 m manual front deck extension	○	○	●
1.22 m manual rear deck extension	●	●	○
1.91 m x 4.06 m Megadeck steel platform (deck extensions retracted)	—	—	○
Fold down handrails	○	—	●
Dual side entry with half swing gates	●	●	●
Lanyard attach points	●	●	●
Proportional drive control with thumb steer	●	●	●
Proportional lift/lower speed control	●	●	●
Joystick enable for lift and drive	●	●	●
Moveable and removable platform console box	●	●	●
Load sensing system	●	●	●
Engine & Transmission			
Kubota D1305 (21.7 kW) diesel engine	●	●	●
Programmable "Personality" settings	—	—	●
On-board self-diagnostic testing	●	●	●
Engine distress warning/shut down system ¹	●	●	●
Hydrostatic drive with anti stall function	●	●	●
Two speed drive selection	●	●	●
Four wheel drive	●	●	●
Functional Equipment & Accessories			
3 degree tilt alarm and indicator light	●	●	●
Guardless system with audio visual alarm	—	—	●
Steel scissor guards	●	●	—
33/1550 x 16.5 foam filled loader lug tread tyres	○	○	—
IN315/55 D20 foam filled loader lug tread tyres	○	○	—
12 x 16.5 foam filled loader lug tread tyres	○	○	●
395/45 D20 foam filled low profile tyres	—	—	○
12 x 16.5 foam filled non mark tyres	○	○	○
395/45 D20 foam filled non mark tyres	—	—	○
Oscillating front axle	—	—	●
Oscillating front axle with DUS	●	●	—
Hydraulic levelling jacks	○	○	●
Lifting/tie down lugs	●	●	●
SkyPower® 7,500W on-board generator package	○	○	○
Hour meter	●	●	●
Ground control selector switch with key lock	●	●	●
Lubrication free scissor arm bushings	●	●	●
Scissor maintenance prop	●	●	●
Horn	●	●	●
Descent alarm	○	○	○
All motion alarm	○	○	○
AC power cable to platform	●	●	●
13 mm air line to platform	○	○	○
Platform work lights (LED)	○	○	○
Nite-Bright® package ²	—	—	○
Nite-Bright® package ³	○	○	—
Flashing amber beacon	○	○	○
Plugs & Sockets	○	○	○
Catalytic purifier muffler	○	○	—
Spark arresting type muffler	○	○	—
Pipe racks (Rail mounted)	○	○	○
12V-DC auxiliary power ⁴	○	○	—

Standard ● Option ○ Not Available —

¹ Low oil pressure and high coolant temperature alarms with shut-down enabled/disabled by analyser.
² Includes four platform mounted LED floodlights

[illegible]This image shows a single sheet of white paper with horizontal ruling lines. The lines are evenly spaced and run across the width of the page. There are no margins, text, or other markings on the paper.

Deutschland

Tel: +49 (0) 421 693 500
JLG Deutschland GmbH
Max-Planck-Straße 21
27721 Ritterhude/Ihlpohl (Bei Bremen)

España

Tel: +34 93 772 47 00
JLG Ibérica, SL
Trapadella, 2
Pol. Ind. Castellbisbal Sur
08755 Castellbisbal (Barcelona)

France

Tel: +33 (0) 553 88 31 70
JLG France SAS
ZI Guillaume mon Amy
CS 30204 Fauillet
F-47400 Tonneins

Italia

Tel: +39 02 9359 5210
JLG Industries (Italia) s.r.l.
Via Po.22
20010 Pregnana Milanese -MI-

Russia

Tel: +7 (495) 967 79 14
JLG Industries Inc.
Vashutinskoe shosse 24b
Khimki, Moscow Region 141400
Russian Federation

Sverige

Tel: +46 (0) 8 506 59500
JLG Sverige AB
Enköpingsvägen 150
Box 704, 176 77 Järfälla

United Kingdom

Tel: +44 (0) 161 654 1000
JLG Industries (United Kingdom) Limited
Bentley House, Bentley Avenue
Middleton, Greater Manchester
M24 2GP

JLG EMEA BV

Tel: +31 (0) 23 565 5665
Polaris Avenue 63
2132 JH Hoofddorp
The Netherlands

JLG Ground Support bvba

Tel: +32 (0) 89 77 49 74
Oude Bunders 1034
Breitwaterstraat 12a
B-3630 Maasmechelen Belgium

Romania Manufacturing Central Europe SRL

Tel: +40 (0) 269 803 974
A. Vlaicu nr. 41
551041 Medias

JLG Industries, Inc. is a leading designer and manufacturer of access equipment and complementary services and attachments.

JLG has manufacturing facilities in the United States, France, Romania, China and Belgium. Customers throughout Europe, Africa and the Middle East benefit from a network of dedicated sales and service operations designed to deliver the highest levels of support.

www.jlg.com **JLG is an Oshkosh Corporation company.**

